

**GEOGRAPHIC RESPONSE PLAN**

**KEYSTONE PIPELINE SYSTEM**

FOR TC ENERGY PIPELINE USE ONLY

Not controlled when printed.

**WINKLER (MB) AREA**

## RESPONSE SUMMARY

This Geographic Emergency Response Plan (GRP) should be used to augment the Keystone Pipeline System Emergency Response Plan (ERP). Information herein does not supersede any component of the Keystone Pipeline System ERP.

All responders using this plan should ensure the TC Energy First Responder Checklist is completed before implementing this plan.

Recommendations in this GRP may be applied to releases from TC Energy's Keystone Pipeline between Kilometer Post 1197 (KmP 1197) and Kilometer Post 1209 (KmP 1209) near Winkler, MB. This plan should be referenced as a guide only during emergency response. Plan writers acknowledge that numerous factors will effect emergency response operations, and all actions should be modified to meet the demands of a specific incident. This plan does not direct actions, but merely serves as a resource to responders.

The Winkler Geographic Response Plan is centered on the Winkler Aquifer where the TC Energy's Keystone Pipeline crosses. The Winkler aquifer is a narrow north-northwest to south-southeast trending glacial outwash sand and gravel aquifer. The aquifer comprises saline groundwater underlying by fresh groundwater, which is used to supply drinking water to the City of Winkler.

The Keystone Pipeline was installed through the aerial extent of the aquifer, diverted around the approximate freshwater recharge area, and installed many meters deep into the aquifer at two stream crossings. Keystone was horizontally directionally drilled below Shannon Creek to approximately 16m below grade and beneath Deadhorse Creek to approximately 23.5m below grade. The majority of drainage towards the Winkler area is from the Manitoba Escarpment high land to the west, towards the Red River Valley to the east. The predominant surface water bodies in the area are the Pembina River, Deadhorse Creek and Shannon Creek. The City of Winkler currently obtains their entire water supply from the Winkler Aquifer. Culturally and environmentally sensitive receptors need to be protected and preserved in the unlikely event of a release. These receptors have been identified through publically available data from both federal and provincial agencies within a 500m buffer of each source and tactical control points. The Winkler Manitoba Tactical Plan developed by Witt/O'Brien's includes a list of all environmental and cultural receptors for each control point. The identified receptors include the Winkler aquifer, water wells, historic sites, soil type, drainage pathway and species of concern. A TransCanada Environmental Specialist will be responsible for managing environmental matters associated with incident response operations, including: environmental assessment; permitting; environmental monitoring and damage assessment; and sensitive habitat and wildlife protection and rehabilitation.

**TABLE OF CONTENTS**

**Table of Contents**

MAPS..... 4

MEDICAL PLAN (ICS FORM 206)..... 9

RESOURCE REQUIREMENT MATRIX..... 10

POTENTIAL INCIDENT COMMAND POST FACILITIES..... 11

POTENTIAL STAGING AREAS ..... 12

LOCAL LODGING..... 13

LOCAL CATERING SERVICES..... 14

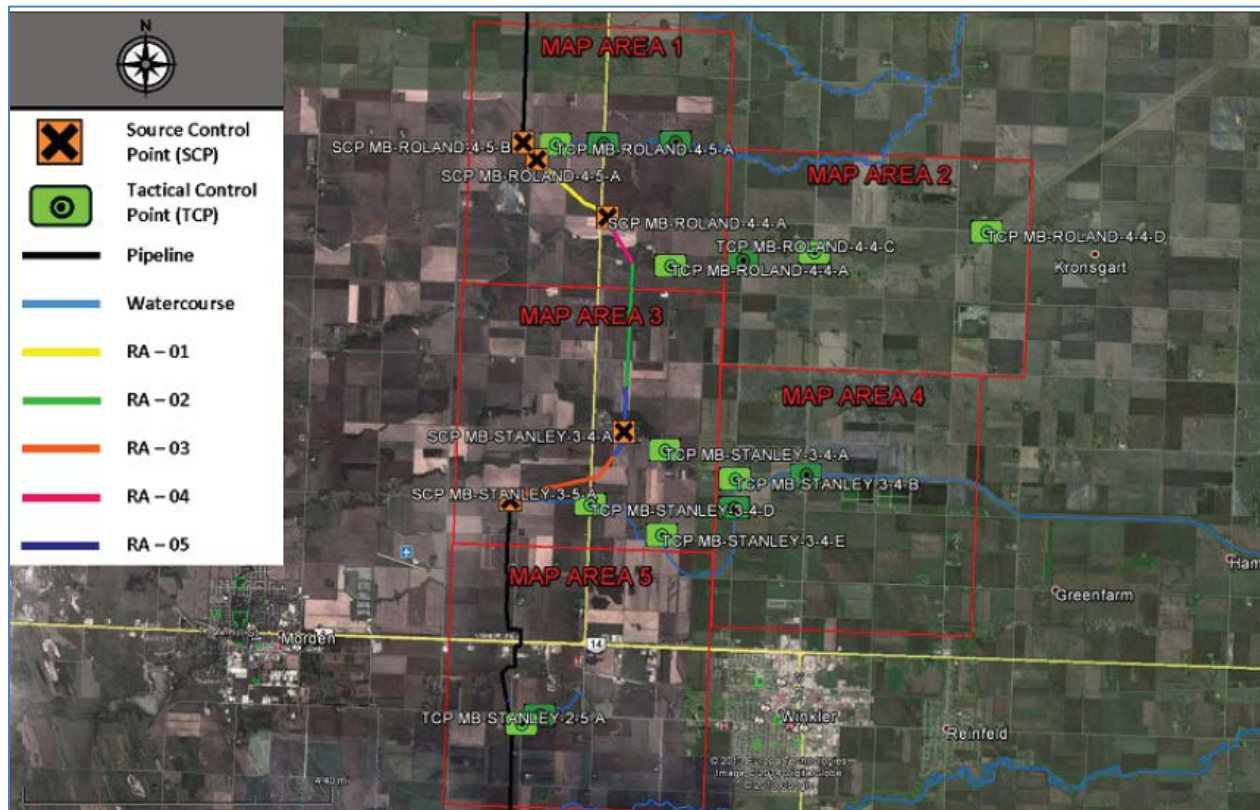
LOCAL RESPONSE CONTRACTORS..... 15

LOCAL CONTACTS..... 16

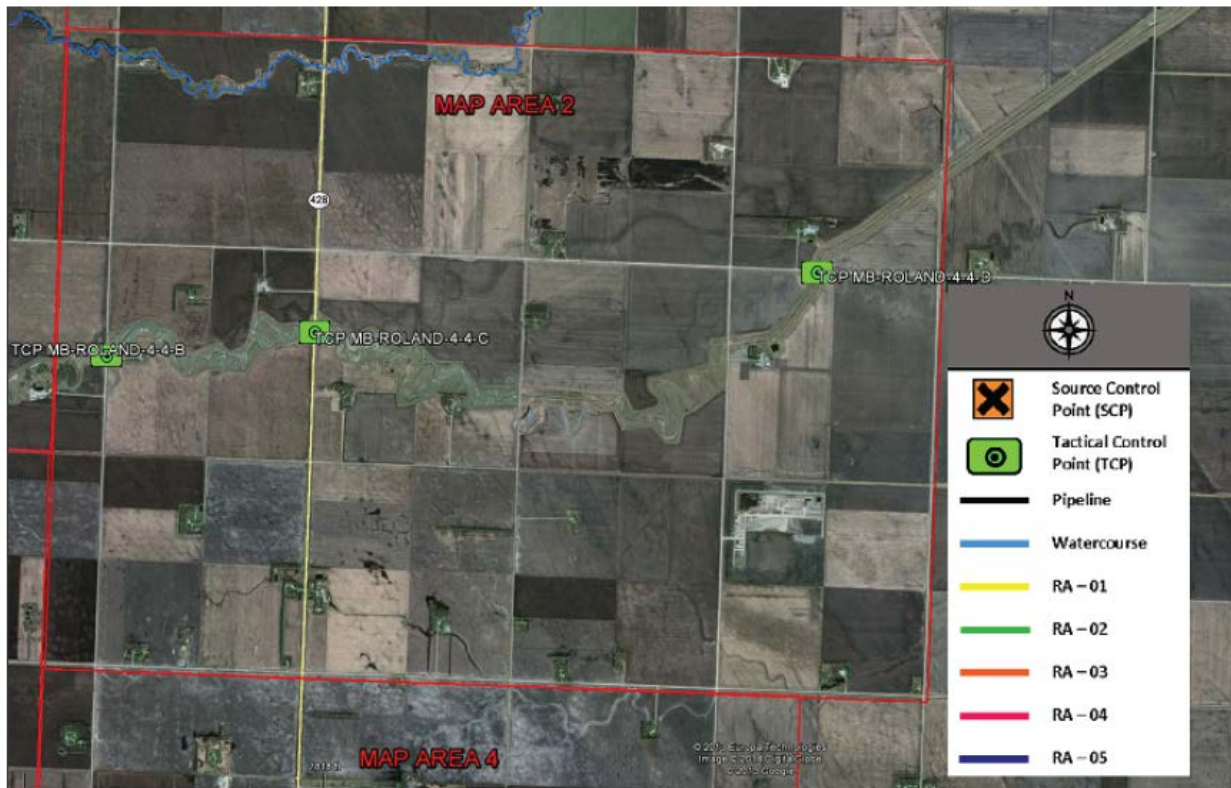
CONTROL POINTS ASSOCIATED WITH THIS PLAN..... 17

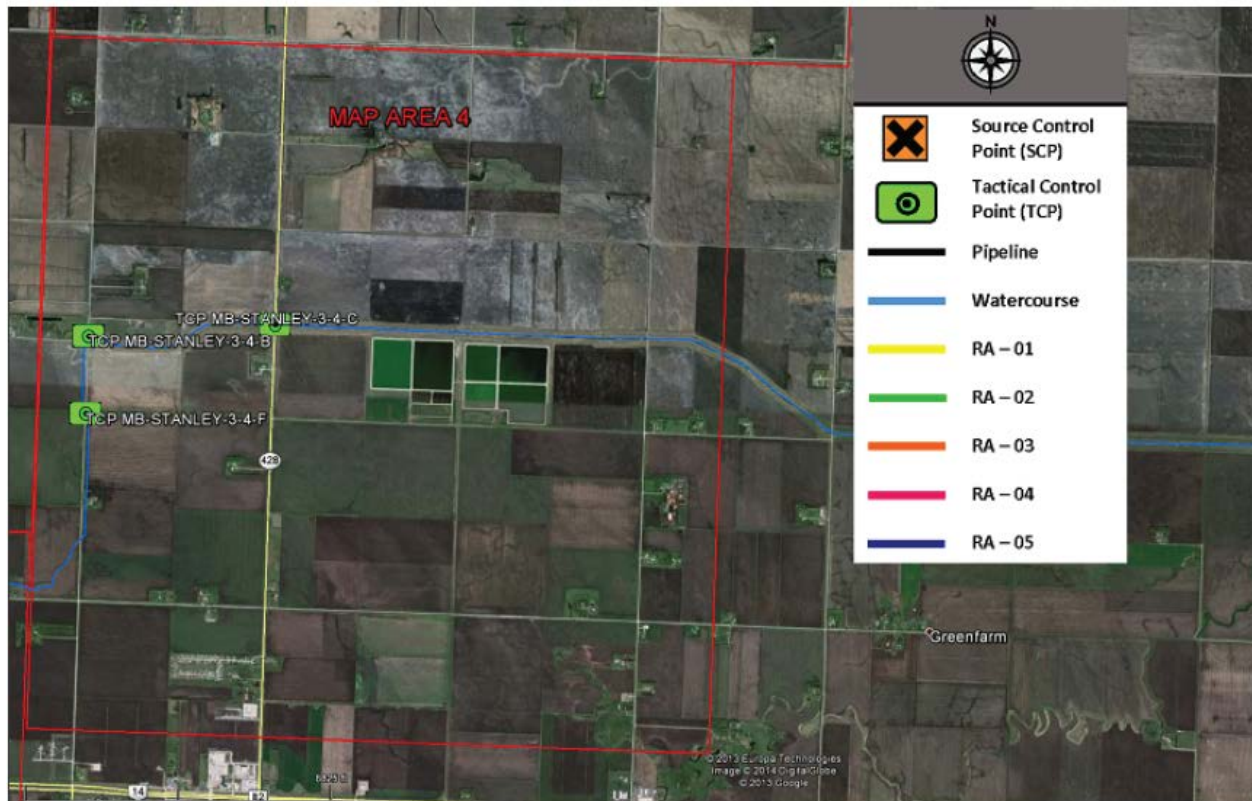
# MAPS

## Overview Map













## MEDICAL PLAN (ICS FORM 206)

<b>Transportation (<i>Air and Ground</i>)</b>							
Name	Location	Contact #	Paramedics On-Site (Y/N)	Landing Zone (LZ) Registered Site (i.e. STARS #145)			
<b>Hospitals</b>							
Hospital Name	Address	Contact #	Travel Time		Burn Center (Y/N)	Heli-Pad (Y/N)	Type (i.e. Trauma Center)
			Air	Ground			
Boundary Trails Health Centre	Junction Hwy 3 and Hwy 14	1-204-331-8800			N	N	
<b>On-Site Medical Procedures</b>							
Personnel On-Site: Call 911 for all medical emergencies.							

## RESOURCE REQUIREMENT MATRIX

	Calculation	Substantive Spills Avg. Most Probable (1% WCD) <i>Redacted 2d</i>	Large Spills Max. Most Probable (10% WCD) <i>Redacted 2d</i>	Worst Case Discharge (WCD) <i>Redacted 2d</i>
Skimmer (TDS 118)	= Volume of oil released/2,400 bbls x 2 to compensate for less 100% efficiency	1	2	20
Powerplant (Generator)	= 1 per skimmer	1	2	20
Pump	= 1 per skimmer	1	2	20
Boom (in feet)	= 1,000 feet per recovery site	1,000	2,000	20,000
Vac Truck	= Volume of oil released/Vac Truck Capacity/ 4 trips per day (Vac Truck Capacity = 70 bbls)	1	9	83
Storage (Frac Tank)	= Volume of oil released/ Frac tank Capacity x 2 Frac Tanks = 500 bbls	1	10	93

## POTENTIAL INCIDENT COMMAND POST FACILITIES

Name/Address	Phone Number	Distance From – Center (Miles/Kilometers)	Conference Room Size	Food Service On Site (Y/N)	Internet Access (Y/N)	Notes
Heartland Inn 851 Main St Winkler, MB R6W 2L8, Canada	(204) 325-4381		Meeting Room accommodates 300 people			

**POTENTIAL STAGING AREAS**

<b>Name/Address Lat/Long</b>	<b>Landowner</b>	<b>Phone number</b>	<b>Size / Area</b>	<b>Description (Paved Gravel, Field, etc.)</b>

## LOCAL LODGING

Name/Address Lat/Long	Phone Number	Distance From – Center (Miles/Kilometers)	Units (Total)	Food Service On- Site (Y/N)	Internet Access (Y/N)	Notes
Quality Inn 851 Main Street, Box 112 Winkler, MB R6W 4A4	1-204-325-4381	131km	40	Y	Y	
Days Inn & Suites Winkler 395 Boundary Trail, Box 988 Winkler, MB R6W 4B1	1-204-325-8888	131km	81	N	Y	Off Hwy 14 main thoroughfare. Breakfast, dinning nearby.
Modern Motor Inn 780 Thornhill Street Morden, MB R6M 1L2	1-204-822-6272	137km	47	Y	Y	Bar& Grill, Catering, Restaurant
Super 8 Motel 3010 Thornhill Street Morden, MB R6M 1L2	1-204-822-2003	137km	10	N	Y	Breakfast. Pet Friendly. Hot tub, Pool. Dinning nearby
Triangle Oasis Motel 880 Centennial Street Winkler, MB R6W 1J4	1-204-325-4348	131km	16	Y	N	

## LOCAL CATERING SERVICES

Name/Address Lat/Long	Phone Number	Distance From – Center (Miles/Kilometers)	Delivery (Y/N)	Notes
Morden Motor Inn 780 Thornhill Stree Morden, MB MB R6M 1L2	1-204-822-6272	147km	Y	Bar & Grill, Catering, Restaurant
Subway 654 Main Street Winkler MB, MB R6W 1A3	1-204-325-7868	135km	Y	Subs and sandwiches
Perogies Plus ltd 512 Railway Street S. Altona, MB R0G0B0	1-204-324-5992	118km	N	
Domino's Pizza D585 First Street Winkler, MB R6W1K2	1-204-331-3009	132km	Y	
Quality Inn- George K catering 851 Mains Street Winkler, MB	1-204-362-2515	131km	Y	

## LOCAL RESPONSE CONTRACTORS

Name/Address Lat/Long	Phone Number	Distance From- Center (Miles/Kilometers)	Notes
National Response Corporation	800-337-7455		
Witt-O'Brien's Slidell, LA	985-781-0804		
Quantum Murray Spill Response Ontario/Alberta	877-378-7745		
Western Canadian Spill Services Calgary, AB	403-250-9606		
Euoway Industrial Services Co. Ltd. Winnipeg, MB	204-661-0500		
HS&E Integrated Brooks, AB	403-362-7867		

## LOCAL CONTACTS

Name	Location	Phone Numbers
City of Morden Mayor's Office	Morden, MB	(204) 822-4434
City of Winkler Mayor's Office	Winkler, MB	(204) 325-9524
Fire Department	Morden, MB	911 or 204-822-3888 (24Hr)
Fire Department	Winkler, MB	911 or 204-325-8151 (24Hr)
Police	Winkler, MB	911 or 204-325-0829 (24Hr)
Police	Morden, MB	911 or 204-822-4900 (24Hr)
RM of Stanley	Winkler, MB	(204) 325-4101



## CONTROL POINTS ASSOCIATED WITH THIS PLAN

This Geographic Response Plan includes several Control Points which may be referenced for recommendation or considerations when containing or recovering released oil in the Winkler, MB area. When this plan is viewed in electronic format with access to the TransCanada intranet, the links below can be clicked to access each Control Point. When this plan is printed and viewed in paper format, the Control Points should also be printed and attached to the Plan.

### SCP ROLAND

- [SCP MB-ROLAND-4-4-A](#)
- [SCP MB-ROLAND-4-5-A](#)
- [SCP MB-ROLAND-4-5-B](#)

### SCP STANLEY

- [SCP MB-STANLEY-3-4-A](#)
- [SCP MB-STANLEY-3-5-A](#)

### TCP ROLAND

- [TCP MB-ROLAND-4-4-A](#)
- [TCP MB-ROLAND-4-4-B](#)
- [TCP MB-ROLAND-4-4-C](#)
- [TCP MB-ROLAND-4-4-D](#)
- [TCP MB-ROLAND-4-4-E](#)
- [TCP MB-ROLAND-4-5-A](#)
- [TCP MB-ROLAND-4-5-B](#)

### TCP STANLEY

- [TCP MB-STANLEY-3-5-B](#)
- [TCP MB-STANLEY-2-5-A](#)
- [TCP MB-STANLEY-3-4-A](#)
- [TCP MB-STANLEY-3-4-B](#)
- [TCP MB-STANLEY-3-4-C](#)
- [TCP MB-STANLEY-3-4-D](#)
- [TCP MB-STANLEY-3-4-E](#)
- [TCP MB-STANLEY-3-4-F](#)