



450 - 1 Street SW
Calgary, Alberta T2P 5H1

Tel: (403) 920-7425
E-mail: kenneth_pountney@tcenergy.com

August 19, 2024

Filed Electronically

Canada Energy Regulator
Suite 210, 517 Tenth Avenue SW
Calgary, Alberta T2R 0A8

Attention: Ramona Sladic, Secretary of the Commission

Dear Ramona Sladic:

**Re: NGTL GP Ltd. (NGTL GP), as general partner on behalf of
NGTL Limited Partnership
2024 Meter Stations and Laterals Abandonment Program
Program Update – Addition of Kakut Creek Lateral
File No.: TBD**

On June 17, 2024, NGTL GP filed an application with the Commission of the Canada Energy Regulator (Commission), pursuant to section 214(1) of the *Canadian Energy Regulator Act* (CER Act) and section 50 of the *Canadian Energy Regulator Onshore Pipeline Regulations* (OPR), for leave to abandon 27-meter stations and 31 lateral pipelines, loops and/or producer tie-ins (Application) all of which are part of the NGTL System (2024 Abandonment Program).¹

Upon further engineering review and progression of the 2024 Abandonment Program design, it has been identified that one additional lateral, associated with facilities proposed to be decommissioned as part of NGTL GP's 2024 Decommissioning Program,² is no longer required and as such, NGTL GP is proposing to include the lateral in the 2024 Abandonment Program (Program Update). NGTL GP confirms this lateral is not necessary to meet customers' future natural gas transportation demands and will permanently cease operations resulting in a discontinuance of service, and the abandonment of this lateral will have no impacts to existing customers or their service on the NGTL System.

For details on the facility proposed to be abandoned, see Table 1 below:

¹ Filing ID: C27787-3.

² Filing ID: C30964.

Table 1: Facility Details

Lateral Pipeline Details						
Name	Diameter (NPS)	Approximate Length (km)	Start Point LSD	End Point LSD	Lateral Abandonment Method	Proposed Abandonment Date
	Diameter (mm)		Additional Isolation Excavation Site(s) LSD(s)			
Kakut Creek Lateral (Retired)	4	6.90	SW 29-076-04 W6M	SE 25-076-04 W6M	In-place	Q1 2026
	114.3		None			

For further details on the location of the lateral, see Attachment 1: Overview Map and Regional Map.

In addition, NGTL GP confirms it is providing the required digital location data for the additional facility concurrently with this submission, in a compatible-electronic format, and in accordance with the instructions for filing this data with the Canada Energy Regulator as outlined in the Filing Manual.³ NGTL GP further notes, that the data being submitted is subject to discrepancies given the age of the facility being abandoned, available drawings and data, and that data may be refined following field surveys/assessments and captured in as-built drawings following the Abandonment Activities.

Scope of Abandonment Activities

Abandonment Activities⁴ will be conducted in accordance with *Canadian Standards Association: National Standard of Canada Oil and Gas Pipeline Systems (CSA Z662-23)* and the OPR. Scope of the Abandonment Activities is outlined in the Application and will be applicable to the lateral.⁵ See Attachment 2: Schematic.

NGTL GP notes the Kakut Creek Lateral is already physically isolated from the NGTL System as a result of being previously discontinued in 1996 under provincial jurisdiction, and in accordance with the Alberta Energy and Utilities Board (EUB, now the Alberta Energy Regulator) Directive 56: Energy Development Applications and Schedules and the *Pipeline Rules*.⁶ NGTL GP has determined the lateral is not necessary to meet customers' future natural gas transportation demands and proposes to abandon the lateral as part of the 2024 Abandonment Program. NGTL GP proposes to excavate at each end of the lateral, purge (run a pig) to confirm no liquids remain and cleaned in accordance with CSA Z662, the OPRs and as described in the Pipeline Cleaning Plan filed with the Application.⁷

³ Filing Manual: Section 1.12 Filing Digital Location Data.

⁴ Per the Application, Abandonment Activities are defined as the physical work to abandon the facilities, whether by removal or in-place.

⁵ Filing ID: C30050-1, PDF pages 12 to 19 of 73.

⁶ Province of Alberta *Pipeline Act* Pipeline Rules, Section 75: Conducting Discontinuance. The pipeline was cleaned, purged with nitrogen, capped at both ends and cathodic protection maintained.

⁷ Filing ID: C30050-4.

Cathodic Protection System

NGTL GP has assessed cathodic protection (CP) requirements for the Kakut Creek Lateral and has determined that three CP test stations are no longer required to maintain pipeline integrity and will be removed. Removal of CP test stations is outlined in the Application,⁸ and applicable to these three additional test stations.

Roads and Railways

There are three public high-grade gravel roads (Range Road 41, 42A and 44) and no provincial paved roads or highways, or railways crossed by the Kakut Creek Lateral. The lateral will be abandoned in-place with no special treatment. The risk of pipeline collapse due to roadway loads is reduced due to the small diameter of pipe (NPS 4) and the depth of cover of the pipeline. Any minor subsidence will be managed as part of routine road maintenance activities carried out by the responsible party.

The lateral will be monitored in accordance with the Abandoned Pipeline Monitoring Plan filed with the Application.⁹

Land Matters

The lateral is located on freehold lands. See Table 2 for description of the land tenure, and Attachment 3: Environmental Site Information Sheets for further details on the location and land usage description. At this time, NGTL GP plans to retain its land rights and maintain the registration of those land rights in all relevant land registry systems. NGTL GP is currently not aware of any foreseeable development for any part of the lateral right-of-way (ROW).

Table 2: Description of Land Tenure

Meter Station		Lateral			
Site Name	Amount of Land (ha) held as Freehold and/or by the Crown	Lateral	KM of Lateral (abandoned in-place or remove)	Amount of Land (ha) Held as Freehold and/or by the Crown	Number of Landowners Along the Lateral
N/A	---	Kakut Creek	6.90 (in-place)	11.37 (freehold)	9

NGTL GP intends to use existing land rights for the work associated with the Abandonment Activities. No new permanent land rights are anticipated to be acquired for the abandonment of the lateral. Temporary workspace (TWS) may be required during physical Abandonment Activities. Should TWS be required, it is anticipated to be located directly on or adjacent to existing land rights. If TWS is required, NGTL GP will acquire the necessary agreements and/or permits from the landowners.

⁸ Filing ID: C30050-1, PDF pages 17 and 18 of 73.

⁹ Filing ID: C30050-5.

Access to the lateral will be via existing roads, trails, utility ROWs and NGTL GP ROWs, where possible.

Environmental Assessment Summary

NGTL GP has conducted an environmental assessment for the Kakut Creek Lateral, and has determined that based on the scope, scale and nature of the additional lateral, potential effects as a result of the addition of the lateral are addressed by existing standard mitigation measures. Environmental protection measures for the 2024 Abandonment Program are included in the Environmental Protection Plan (EPP) filed with the Application.¹⁰ NGTL GP confirms the final EPP for the 2024 Abandonment Program will be updated to include the Kakut Creek Lateral (i.e., Table 1: 2024 Abandonment Program Facilities and Table 2: Summary of Watercourse Crossings); however, there are no new mitigation measures as a result of the addition of Kakut Creek Lateral. See Attachment 3: Environmental Site Information Sheets and Attachment 4: Biophysical and Socio-Economic Setting for additional environmental details.

As described in the Application,¹¹ recent Alberta Ministry of Arts, Culture and Status of Women (Alberta Culture) guidance on pipeline abandonment projects states that *Historical Resource Act* (HRA) approval must be received for all Project Development Areas (PDAs) on a lateral/asset that has at least one PDA that intersects Historic Resource Value (HRV) lands. The Kakut Creek Lateral currently has one PDA (i.e., CP test station) that intersects HRV lands; therefore, one Historic Resources (HR) application for the Kakut Creek Lateral will be submitted for HRA approval. Ground disturbance and Abandonment Activities at the PDAs will be largely limited to previously disturbed areas. Any conditions of approval issued by Alberta Culture will be implemented by NGTL GP.

NGTL GP has assessed the potential short-term and long-term environmental and socio-economic effects on each environmental and socio-economic valued component that may result from the Kakut Creek Lateral being abandoned in-place and/or removed. The potential short and long-term effects are the same as those provided in Attachment 6: Land Use and Comparison of Effects.¹²

A desktop study of Kakut Creek Lateral identified an interaction between one of the PDAs and a trumpeter swan waterbody (requiring an 800 m buffer between April 1 and September 30). Given the work is scheduled to occur outside of the sensitive timing window, and the PDA located on cultivated, freehold land and is immediately adjacent to an existing public road, no site-specific mitigation is recommended and no updates to the EPP are required due to this interaction. The Kakut Creek Lateral does not interact with any other federally and/or provincially delineated wildlife ranges.

There are no wetlands or watercourses within 30 m of the PDAs on the Kakut Creek Lateral.

¹⁰ Filing ID: C30050-9.

¹¹ Filing ID: C30050-1, PDF page 28 of 73.

¹² Filing ID: C30050-7.

Historical occurrences of the Alberta Conservation Information Management System (ACIMS) listed plant species of conservation concern (Carolina wild geranium, from 1948; ranked S2) was identified within one PDA; however, the site is now cultivated. There are no rare vegetation concerns associated with the lateral. The Kakut Creek Lateral is located in a county with documented clubroot occurrences (Birch Hills County). Standard mitigation for clubroot is included in the EPP.¹³

There are no changes to the planned mitigation and predicted residual effects described in Application's Attachment 7: Interactions Table,¹⁴ as a result of the addition of Kakut Creek Lateral. The environmental and socio-economic assessment for the Kakut Creek Lateral determined that the 2024 Abandonment Program is not likely to result in significant adverse environmental or socio-economic effects or cumulative effects. Adverse environmental effects are expected to be mitigated effectively with the standard and site-specific environmental protection measures outlined in the EPP.

Phase I Environmental Site Assessments

A Phase I Environmental Site Assessments (Phase I ESA) was conducted by a third-party environmental consultant for the lateral, as per the guidance provided in the most recent version of *Canadian Standards Association: Phase I Environmental Site Assessment Standard* (CSA Z769-00, 2018). Areas of potential environmental concern corresponding to current and historical infrastructure (e.g., underground separators and underground tanks) and/or historical activities (e.g., mercury manometer usage) were not identified. See Attachment 5: Phase I ESA for the Kakut Creek Lateral.

Stakeholder and Rightsholder Engagement

NGTL GP sent notification of the Program Update to the following potentially affected stakeholders and rightsholders:

- landowners
- Indigenous groups engaged on the Program
- land users and rightsholders (e.g., occupants, land users [trappers, grazing lease holders etc.] and industry parties)
- regional elected officials and staff, and regional emergency responders
- provincial and federal departments (Alberta Environment and Protected Areas, Alberta Culture, Fisheries and Oceans Canada, and Environment and Climate Change Canada)
- Tolls, Tariff, Facilities and Procedures Committee

¹³ Filing ID: C30050-9.

¹⁴ Filing ID: C30050-8.

To date, no outstanding issues or concerns have been raised by any of the stakeholders or rightsholders on the Program Update. NGTL GP will continue to notify stakeholders and rightsholders regarding the 2024 Abandonment Program and will address any questions and/or concerns through its ongoing engagement efforts, should any arise, and throughout the regulatory process and Abandonment Activities. NGTL GP will post this Program Update on its external website.¹⁵

Abandonment Costs and Funding, Original Book Costs and Tolls and Service Impacts

The estimated cost of abandoning the lateral is approximately \$0.4 million. This cost estimate is consistent with the costs of the original scope of the 2024 Abandonment Program and includes all activities associated with the physical abandonment of the lateral. NGTL GP confirms that interim funding is available for all costs associated with the 2024 Abandonment Program.¹⁶ NGTL GP intends to subsequently seek reimbursement from its Abandonment Trust for all abandonment costs. Reimbursement will be the subject of a subsequent application to the Commission. Further, the costs associated with these additional sites will be treated as ordinary retirements in accordance with the *Gas Pipeline Uniform Accounting Regulations*.¹²

The original book cost of the Kakut Creek Lateral is approximately \$65,178.00 and at retirement shall be credited to the appropriate plant account. There is no expected impact on the remaining rate base. The 2024 Abandonment Program, including the abandonment of this lateral, is expected to have no material impact on NGTL System rates or on the current transportation services offered on the NGTL System.

For enquiries, please contact me at (403) 920-7425 or at kenneth_pountney@tcenergy.com.

Yours truly,
**NGTL GP Ltd., as general partner on behalf of
NGTL Limited Partnership**

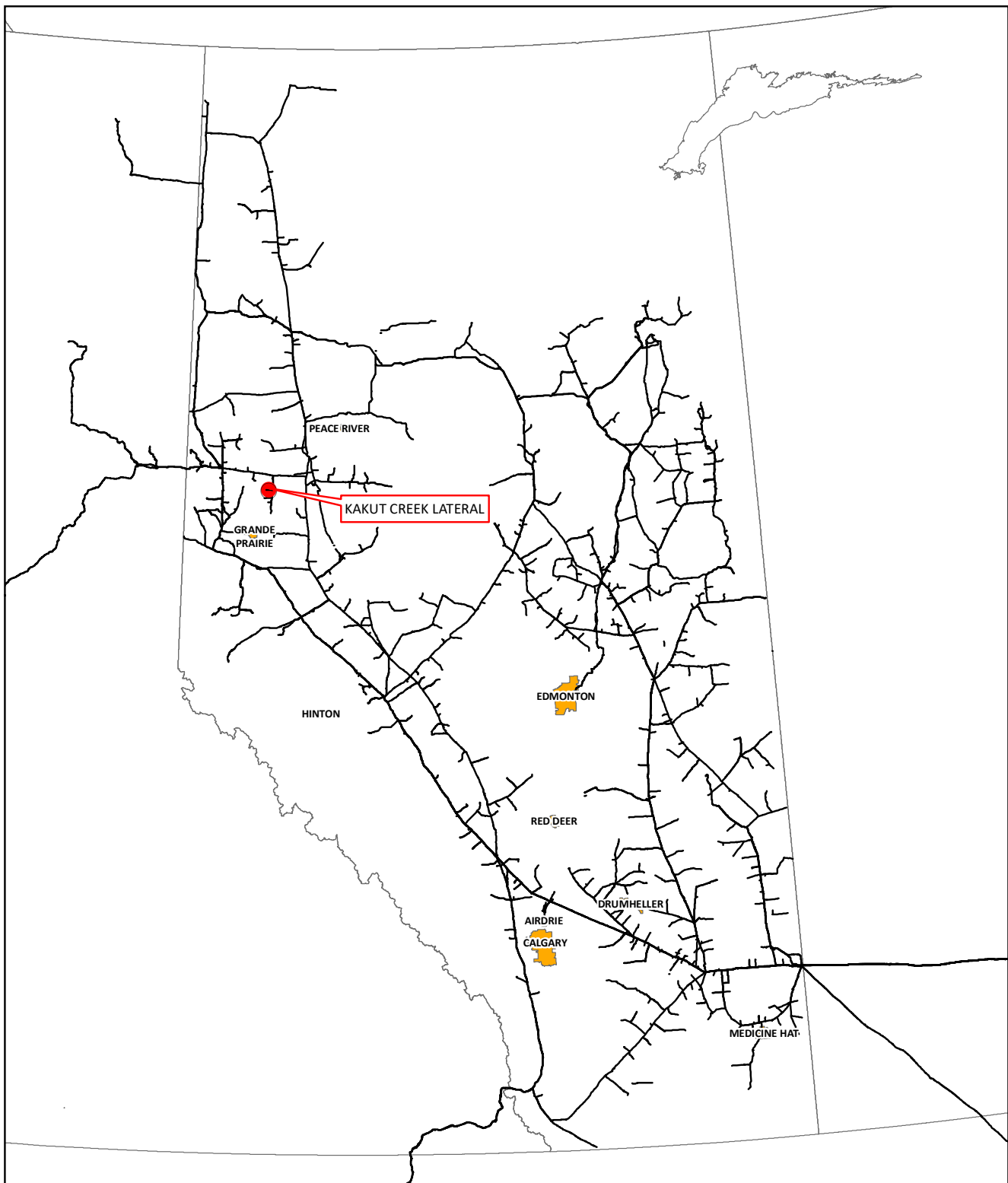
Original signed by

Kenneth Pountney
Regulatory Project Manager,
Regulatory Facilities, Canadian Natural Gas Pipelines

Attachments

¹⁵ <https://www.tcenergy.com/2024abandonment>.

¹⁶ Filing ID: C30050-1, PDF page 55 and 56 of 73.



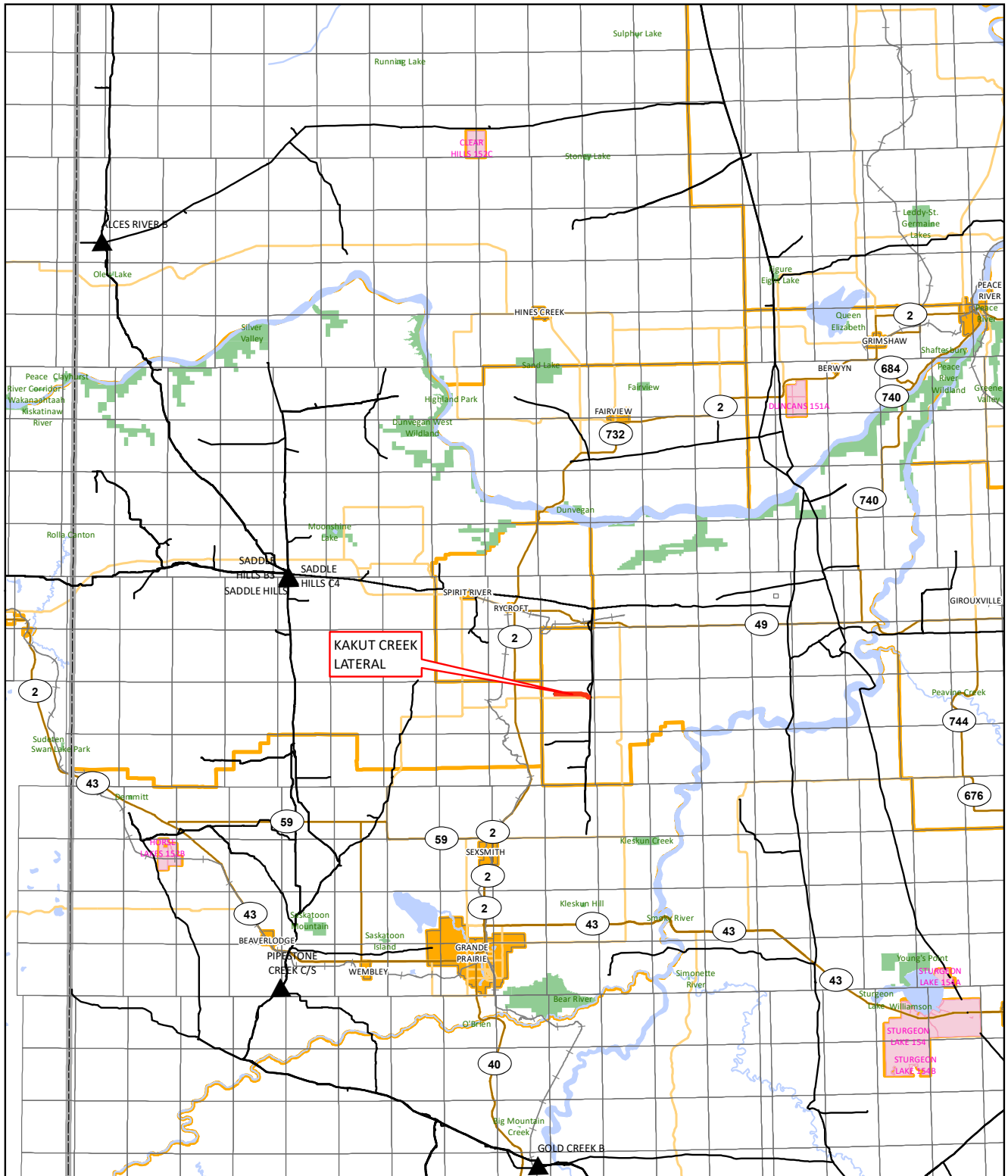
TERMS OF USE: The datasets used to create this map have been gathered from various sources for a specific purpose. TC Energy provides no warranty regarding the accuracy or completeness of the datasets. Unauthorized or improper use of this map, including supporting datasets is strictly prohibited. TC Energy accepts no liability whatsoever related to any loss or damages resulting from proper, improper, authorized or unauthorized use of this map and associated datasets and user expressly waives all claims relating to or arising out of use of or reliance on this map.

2024 Abandonment Program Update		
Global		
CARTOGRAPHER:	RH	24-07-15
REVIEWER:	AA	24-07-15
APPROVER:	AA	24-07-15

- Project Location
- TC Energy Pipeline
- City / Town



LOCATION:	REVISION: 1	ISSUED DATE: 24-07-15
COORDINATE SYSTEM: NAD 1983 UTM Zone 11N		ISSUE PURPOSE: IFU
0 25 50 100 150 200 250 km		
FILE NAME: T_0498_001_01_KukatCreek.mxd		

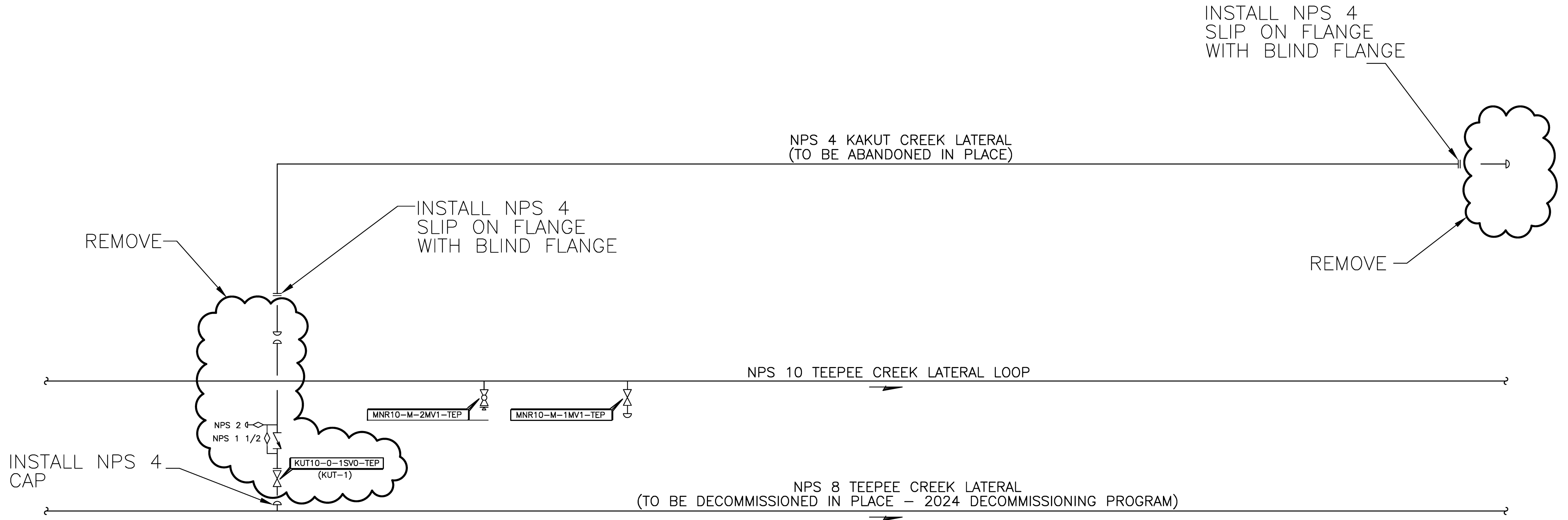


TERMS OF USE: The datasets used to create this map have been gathered from various sources for a specific purpose. TC Energy provides no warranty regarding the accuracy or completeness of the datasets. Unauthorized or improper use of this map, including supporting datasets is strictly prohibited. TC Energy accepts no liability whatsoever related to any loss or damages resulting from proper, improper, authorized or unauthorized use of this map and associated datasets and user expressly waives all claims relating to or arising out of use of or reliance on this map.

KAKUT CREEK LATERAL					
Regional					
CARTOGRAPHER:	RH	24-07-15	LOCATION: REVISION: 1 ISSUED DATE: 24-07-15 COORDINATE SYSTEM: NAD 1983 UTM Zone 11N ISSUE PURPOSE: IFU 0 5 10 20 30 40 km MAP NUMBER: T_0498_002_01_KukatCreek.mxd		
REVIEWER:	AA	24-07-15			
APPROVER:	AA	24-07-15			

Not all legend elements may appear on the map

NPS 4 KAKUT CREEK LATERAL



INSTALL NPS 4
SLIP ON FLANGE
WITH BLIND FLANGE

NPS 4 KAKUT CREEK LATERAL
(TO BE ABANDONED IN PLACE)

INSTALL NPS 4
SLIP ON FLANGE
WITH BLIND FLANGE

REMOVE

REMOVE

NPS 10 TEEPEE CREEK LATERAL LOOP

NPS 8 TEEPEE CREEK LATERAL
(TO BE DECOMMISSIONED IN PLACE - 2024 DECOMMISSIONING PROGRAM)

INSTALL NPS 4
CAP

NPS 2
NPS 1 1/2

KUT10-0-1SV0-TEP
(KUT-1)

MNR10-M-2MV1-TEP

MNR10-M-1MV1-TEP

INFORMATION ON THIS DRAWING IS NOT TO SCALE.
NON-PRESSURE AND PRESSURE CONTAINING MATERIAL
MAY BE REPLACED BY EQUIVALENT FITTINGS SUCH AS
BLIND FLANGES, CAPS, ETC.



PROGRAM COMPONENT	Kakut Creek Lateral	
PROJECT DEVELOPMENT AREA	KAK4-VS-1	
PLANNED ACTIVITIES	Isolation from NGTL GP line; Abandon in-place	
LEGAL LAND LOCATION	SE 25-076-04 W6M	
LAND OWNERSHIP	Freehold	
LAND USE	White Area; land use within the buffered area is: cultivated and facility	
RESOURCES AND CONSTRUCTION MITIGATION MEASURES	SOILS DESCRIPTION	<ul style="list-style-type: none"> 100% Dark Gray Luvisol (Saddle) developed over moderately fine till. Well drained. Considerations: Moderate to high water erosion risk on slopes <5% and moderate compaction and rutting risk.
	SOIL HANDLING / SOIL SALVAGE DEPTH AND CRITERIA	<ul style="list-style-type: none"> See Environmental Notes for mitigation related to soil handling / soil salvage depth and criteria.
	WATERCOURSES	<ul style="list-style-type: none"> No watercourses within or intersecting the PDA. No watercourses within 100 m of the PDA. See Environmental Notes for mitigation related to watercourses.
	FISHERIES RESOURCES	<ul style="list-style-type: none"> No fish-bearing watercourses within or intersecting the PDA. No fish-bearing watercourses within 100 m of the PDA. See Environmental Notes for mitigation related to watercourses.
	VEGETATION	<ul style="list-style-type: none"> No rare vegetation concerns. See Environmental Notes for mitigation related to vegetation and weeds.
	WETLANDS	<ul style="list-style-type: none"> No wetlands identified within 30 m of the PDA. See Environmental Notes for mitigation related to wetlands.
	WILDLIFE	<ul style="list-style-type: none"> See Environmental Notes for mitigation measures related to the following: <ul style="list-style-type: none"> Migratory bird nesting period for the PDA is May 2 to August 10
	HISTORICAL RESOURCES	<ul style="list-style-type: none"> There are no known HRV lands or historical resources within the PDA. HRV lands intersect one other PDA (i.e. CP test station) on the Kakut Creek Lateral and HRA Approval is therefore required per recent direction from Alberta Culture for the 2024 Abandonment Program. HR Application will be submitted to Alberta Culture for HRA Approval. Any conditions of approval issued by Alberta Culture will be implemented by NGTL GP. See Environmental Notes for mitigation related to historical resources.
	TRADITIONAL LAND USE	<ul style="list-style-type: none"> Currently there are no known TLU sites within the PDA. See Environmental Notes for mitigation related to TLU.
	SITE CONTAMINATION CONSIDERATIONS	<ul style="list-style-type: none"> See Environmental Notes for mitigation related to site contamination considerations.
ACCESS	<ul style="list-style-type: none"> Restrict all abandonment activities to the approved Project site. All Project traffic will adhere to safety and road closure regulations. 	
RECLAMATION	<ul style="list-style-type: none"> Where the pipe or a facility has been removed, as required, acquire an appropriate volume of fill to replace the void. Fill material must be clean, free of weeds, match surrounding soil texture and be approved in accordance with Company requirements prior to use. See Environmental Notes for mitigation related to reclamation. 	
OTHER		

NOTES:
Refer to the Environmental Protection Plan for a complete understanding of the mitigation requirements for the Project.

Legend

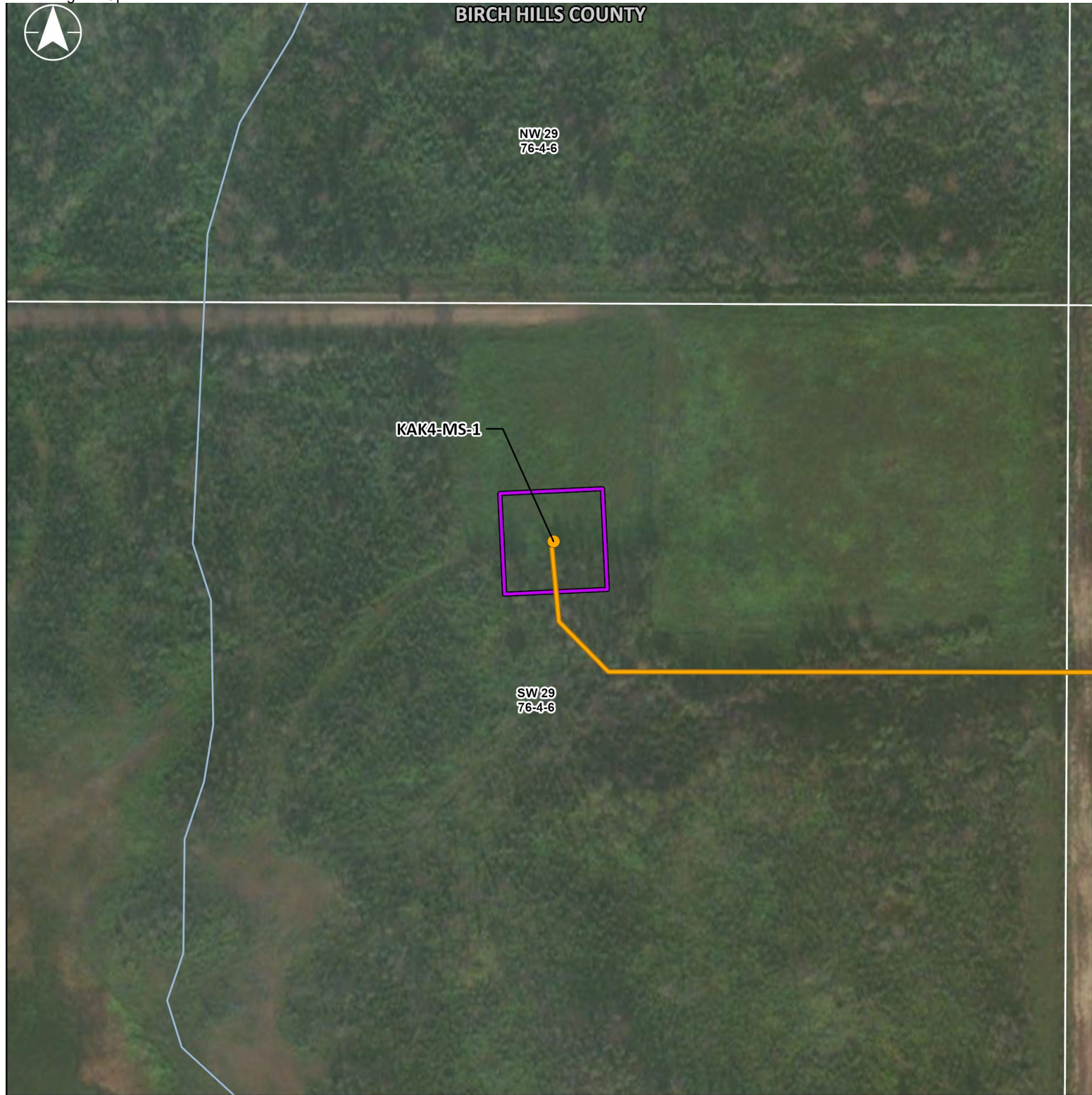
Project Data

- Isolation Point
- Abandonment Pipeline
- Project Development Area (PDA)

Base Data

- Stream
- Municipal Boundary

SHEET REVISION Rev 0	ITERIAL ID 0	PROJECTION 10TM AEP Forest	DATUM NAD 83	PREPARED BY Jacobs	ENVIRONMENTAL SITE INFORMATION SHEET 2024 ABANDONMENT PROGRAM Kakut Creek Lateral
<small>Project Data: TransCanada Pipelines Ltd. Jacobs 2024; Transportation: Atlas IS 2019; Alberta Municipal Boundaries: Atlas 2021; Hydrology: IMS 2011; BIOCen 2009; Wetlands: Jacobs 2024; Wetlands Resources: Alberta Culture and Tourism 2023; Vegetation: Alberta Environment and Parks 2022; Wildlife Sensitivity: Alberta Environment and Parks 2021; Wildlife Critical Habitat: Environment and Climate Change Canada 2022; AGRASIS: Soils 4.0; Alberta Agriculture and Rural Development; 2014; Imagery Source: Esri, Maxar, FAO, NOAA, USGS, EPA, AMFC, NRCan, Source: Esri, Maxar, Earthstar Geomatics, FAO, NOAA, EPA, AA, Community.</small>				DATE July 2024	
				PREPARED FOR TC Energy	



PROGRAM COMPONENT	Kakut Creek Lateral	
PROJECT DEVELOPMENT AREA	KAK4-MS-1	
PLANNED ACTIVITIES	Isolation from NGTL GP line; Abandon in-place	
LEGAL LAND LOCATION	SW 29-076-04 W6M	
LAND OWNERSHIP	Freehold	
LAND USE	White Area; land use within the buffered area is: tame pasture and cutblock-deciduous	
RESOURCES AND CONSTRUCTION MITIGATION MEASURES	SOILS DESCRIPTION	<ul style="list-style-type: none"> 100% Gleyed Dark Gray Luvisol (Esher) developed over very fine glaciolacustrine sediments. Moderately well drained. Considerations: Stripping limitations (not obvious colour change to subsoil), moderate to high water erosion risk on slopes <5%, saline or sodic lower subsoil, and moderate to high compaction and rutting risk.
	SOIL HANDLING / SOIL SALVAGE DEPTH AND CRITERIA	<ul style="list-style-type: none"> See Environmental Notes for mitigation related to soil handling / soil salvage depth and criteria.
	WATERCOURSES	<ul style="list-style-type: none"> No watercourses within or intersecting the PDA. PDA is within 100 m of an unnamed tributary to Kakut Lake (WBID 226272). See Environmental Notes for mitigation related to watercourses.
	FISHERIES RESOURCES	<ul style="list-style-type: none"> No fish-bearing watercourses within or intersecting the PDA. PDA is within 100 m of an unnamed tributary to Kakut Lake (WBID 226272). The watercourse is a Class C water body with a RAP from April 16 to July 15. No fish sampling has been completed to date. No instream works or temporary vehicle/equipment crossing required. See Environmental Notes for mitigation related to watercourses.
	VEGETATION	<ul style="list-style-type: none"> No rare vegetation concerns. See Environmental Notes for mitigation related to vegetation and weeds.
	WETLANDS	<ul style="list-style-type: none"> No wetlands identified within 30 m of the PDA. See Environmental Notes for wetland mitigation.
	WILDLIFE	<ul style="list-style-type: none"> See Environmental Notes for mitigation measures related to the following: <ul style="list-style-type: none"> Migratory bird nesting period for the PDA is May 2 to August 10
	HISTORICAL RESOURCES	<ul style="list-style-type: none"> There are no known HRV lands or historical resources within the PDA. HRV lands intersect other PDA (ie; CP test station) on the Kakut Creek Lateral and HRA Approval is therefore required per recent direction from Alberta Culture for the 2024 Abandonment Program. HR Application will be submitted to Alberta Culture for HRA Approval. Any conditions of approval issued by Alberta Culture will be implemented by NGTL GP. See Environmental Notes for mitigation related to historical resources.
	TRADITIONAL LAND USE	<ul style="list-style-type: none"> Currently there are no known TLU sites within the PDA. See Environmental Notes for mitigation related to TLU.
	SITE CONTAMINATION CONSIDERATIONS	<ul style="list-style-type: none"> See Environmental Notes for mitigation related to site contamination considerations.
	ACCESS	<ul style="list-style-type: none"> Restrict all abandonment activities to the approved Project site. All Project traffic will adhere to safety and road closure regulations.
	RECLAMATION	<ul style="list-style-type: none"> Where the pipe or a facility has been removed, as required, acquire an appropriate volume of fill to replace the void. Fill material must be clean, free of weeds, match surrounding soil texture and be approved in accordance with Company requirements prior to use. See Environmental Notes for mitigation related to reclamation.
OTHER		

NOTES:
Refer to the Environmental Protection Plan for a complete understanding of the mitigation requirements for the Project.

AERIAL PHOTOGRAPHY

<p>Legend</p> <p>Project Data</p> <ul style="list-style-type: none"> ● Isolation Point Abandonment Pipeline Project Development Area (PDA) 	<p>Base Data</p> <ul style="list-style-type: none"> — Stream Municipal Boundary 	
--	--	--

SHEET REVISION Rev 0	ITERIAL ID 0	PROJECTION 10TM AEP Forest	DATUM NAD 83	<p>PREPARED BY</p> <p>Jacobs</p> <p>DATE</p> <p>July 2024</p>
<p>Project Data: TransCanada Pipelines Ltd. Jacobs 2024. Transportation: ABUS 2019; Alberta Municipal Boundaries: Alberta 2021; Hydrology: HRS 2011; NRCAN 2009; Wetlands: Jacobs 2024; History: Resources: Alberta Culture and Tourism 2023; Vegetation: Alberta Environment and Parks 2022; Wildlife Sensitivity: Alberta Environment and Parks 2021; Wildlife Critical Habitat: Environment and Climate Change Canada 2022; AGRASID Soils 4.0; Alberta Agriculture and Rural Development, 2014.</p> <p>Imagery: Source: Esri, Mapbox, FAO, NOAA, USGS, EPA, AAPFC, NRCAN, Massar.</p>				<p>PREPARED FOR</p> <p>TC Energy</p>
<p>0 30 60 90</p> <p>Metres - 1:1,500</p> <p style="font-size: small;">Original Page Size: 11 x 17</p>		<p>ENVIRONMENTAL SITE INFORMATION SHEET</p> <p>2024 ABANDONMENT PROGRAM</p> <p>Kakut Creek Lateral</p>		

Table 4-1: Biophysical and Socio-Economic Setting

Program Component	Facility Type	Biophysical Setting	Socio-Economic Setting
Kakut Creek	Lateral with CP sites	<p>Vegetation:</p> <ul style="list-style-type: none"> • PDAs are located within the Dry Mixedwood Natural Subregion. • PDAs are located within cutblock^d, tame pasture, cultivated^f, and industrial^c lands. • There is a buffered historical occurrence of an ACIMS listed plant species (Carolina wild geranium, from 1948) (S2) that overlaps the footprint of one of the CP sites; however, the site is now cultivated. <p>Wetlands:</p> <ul style="list-style-type: none"> • PDAs are located within the Continental Mid-boreal of the Mid-boreal Wetland Region. • No wetlands were identified within 30 m of the PDAs. <p>Watercourses:</p> <ul style="list-style-type: none"> • One PDA is within 100 m of an unnamed tributary to Kakut Lake (GoA 2024a). The unnamed tributary is Class C with a RAP from April 16 to July 15 (AENV 2006d). <p>Wildlife:</p> <ul style="list-style-type: none"> • One PDA is located within the 800 m buffer of a provincially identified trumpeter swan waterbody. The PDA is located on freehold land, within a cultivated field and adjacent to an existing public road. Abandonment Activities are scheduled outside of the sensitive timing window. • PDAs are located within Migratory Bird Nesting Zone B5 with a primary nesting period and extended period for species at risk of May 2 to August 10. 	<p>Land:</p> <ul style="list-style-type: none"> • There is no federal land within the PDAs. • PDAs intersect freehold land. • PDAs are in Birch Hills County. • PDAs are in the White Area of Alberta. • The PDAs do not overlap any provincial parks or protected areas. <p>Nearest Community:</p> <ul style="list-style-type: none"> • The nearest community is the Town of Spirit River, Alberta, located approximately 23 km northwest. • The nearest occupied Indigenous land base is Duncan's 151A Reserve, located approximately 64 km northeast of the PDAs. <p>Historical Resources:</p> <ul style="list-style-type: none"> • One PDA (i.e., CP test station) intersects lands with a designated HRV of 5a indicating high potential for archaeological resources (GoA 2024b).
<p>Notes:</p> <p>^a Forested = coniferous, deciduous or mixed wood.</p> <p>^b Existing ROW = pipeline ROW, transmission ROW etc. Will remain shrub (not regrow to forest) during operational life.</p> <p>^c Industrial = facility and road.</p> <p>^d Cutblock = allowed to regrow to forest.</p> <p>^e Grassland = native grasslands; those that contain ≥30% native species.</p> <p>^f Cultivated = crop and hay.</p>			



Phase I Environmental Site Assessment

NPS 4 Kakut Creek Lateral
LSD 06-29-076-04 W6M to 02-25-076-04 W6M
Near Grande Prairie, Alberta

July 24, 2024
Trace Project No. 200-4148

Prepared for:
NGTL GP Ltd.
450 – 1 Street SW
Calgary, Alberta T2P 5H1

Prepared by:
Trace Associates Inc.
Trace 385 Centre, 385 Carleton Drive
St. Albert, Alberta T8N 7L1
traceassociates.ca



DOCUMENT CONTROL

Revision	Description	Project Manager	File Location	Date Issued
Draft	Issued for client review	John Forbes	P: Drive (Secretary)	July 22, 2024
0	Issued for client use	John Forbes	P: Drive (Secretary)	July 24, 2024



TABLE OF CONTENTS

Table of Contents	ii
1.0 Introduction	1
1.1 Objective	1
1.2 Scope of Work	1
2.0 Site Characterization	2
2.1 Site Description.....	2
2.1.1 Topography, Physiography, and Surface Water	2
2.2 Site Feature Details	2
2.2.1 Sewage Disposal and Wastewater.....	2
2.2.2 Pits and Lagoons.....	3
2.2.3 Sumps and Drains	3
2.2.4 Watercourses, Ditches, or Standing Water	3
2.2.5 Potable Water Supply.....	3
2.2.6 Wells	3
2.2.7 Hazardous Materials, Storage Tanks, and Chemical Containers	3
2.2.8 Staining and Stained Materials.....	3
2.2.9 Odours	3
2.2.10 Stressed Vegetation	3
2.2.11 Fill Areas.....	3
2.2.12 Hydraulic Elevators/Hoists.....	4
2.3 Off-site Observations.....	4
3.0 Interview	4
4.0 Records Review	4
4.1 Land Title Records	4
4.2 Aerial/Satellite Photographs	4
5.0 Regulatory Inquiries	5
5.1 Birch Hills County	5
5.2 Alberta Safety Codes Authority	5
5.3 Alberta Online Water Well Database.....	6
5.4 Alberta Online Approval Viewer.....	6
5.5 Alberta Environmental Site Assessment Repository Database	6
5.6 Alberta Government – Spatial Information System Website	6
5.7 Alberta Conservation Information Management System.....	6
5.8 Canada Energy Regulator – Interactive Pipeline Map	6
5.9 Canada Energy Regulator – REGDOCS Database Search.....	6
5.10 Alberta Biodiversity Monitoring Institute Wetland Inventory	6
5.11 Alberta Energy Regulator – Oil and Gas-related Facilities, Spills, and Complaints.....	7
5.11.1 Pipelines	7
5.11.2 Wellsites	7
5.11.3 Facilities.....	7



5.11.4 Spills and Complaints	7
5.11.5 Dispositions	7
5.12 Business Directories	8
5.13 Fire Insurance Plans.....	8
6.0 Previous Environmental Reporting and Documents.....	8
6.1 Soil-Info Ltd. – Pipeline Reclamation Assessment of the Kakut Creek Lateral.....	8
7.0 Discussion and Conclusions	8
8.0 Qualifications of the Assessors.....	9
9.0 Limitations of Report	9
10.0 Closure and Quality Management.....	10
11.0 References	11



FIGURES

Figures 1.1 to 1.3Lateral Atlas Map

APPENDICES

Appendix A Pipeline Alignment Sheets and Adjacent Meter Station Plot Plans

Appendix B Birch Hills County Ownership Map Current Land Title Records

Appendix C Aerial Photographs

Appendix D Regulatory Documentation

- Birch Hills County File Review Response
- Alberta Safety Codes Authority Tank Search
- Alberta Water Well Information Database Map
- Alberta Approval Viewer Search
- Alberta Environmental Site Assessment Repository Search
- Alberta Government Spatial Information System Search
- Alberta Conservation Information Management System Search
- Canada Energy Regulator Interactive Pipeline Map
- AbaData ABMI Wetland Inventory Map
- AbaData Facilities, Pipelines, Spills, and Wells Map
- AbaData Pipeline Report
- AbaData Well Report
- AbaData Facility Report
- AbaData Spill Report



1.0 INTRODUCTION

NGTL GP Ltd. (NGTL GP), as general partner on behalf of NGTL Limited Partnership retained Trace Associates Inc. (Trace) to conduct a Phase I Environmental Site Assessment (Phase I ESA) for the 6.9-kilometre (km) Kakut Creek Lateral (nominal pipe size [NPS] 4) located from LSD 06-29-076-04 W6M to LSD 02-25-076-04 W6M, near Grande Prairie, Alberta. The pipeline was constructed in 1985 and discontinued in 1996. The pipeline and associated right-of-way are hereinafter referred to as the “Site.” NGTL GP provided written authorization to proceed with the project on July 10, 2024.

The Phase I ESA was conducted in general accordance with the following documents:

- The Canadian Standards Association Group (CSA) *Phase I Environmental Site Assessment* standard Z768-01 (CSA, 2001). As per CSA standards, there were no enhancements (e.g., risk evaluations, recommendations regarding remedial measures) to the Phase I ESA. Plot plans for the adjacent Kakut Creek Receipt Meter Station and alignment sheets for the Site are provided in Appendix A. It is important to note that a site visit was not conducted as part of this assessment.
- The Canada Energy Regulator (CER) *Remediation Process Guide* (CER, 2020b).
- The Field Services and/or Small Construction Services Agreement between TC Energy and Trace.

1.1 Objective

The objective of conducting the Phase I ESA was “to identify all areas of existing and/or potential contamination, and include an evaluation of the status of any existing contamination currently documented or contamination previously remediated,” with respect to the infrastructure, operations, and activities current or historically at the Site. The Phase I ESA is required as part of NGTL GP’s facility abandonment application under Guide B of the CER *Filing Manual* (CER, 2020a).

1.2 Scope of Work

The following activities were conducted as part of the Phase I ESA:

- Reviewed historical environmental reports, survey plans, and/or as-built drawings (as provided by the client) related to the Site (Appendix A).
- Reviewed current land title information for the Site from the Alberta Spatial Information System (SPIN2) (Appendix B).
- Investigated and collected relevant environmental information and/or reporting pertaining to the Site from the applicable municipal agency, the Alberta Safety Codes Authority (ASCA) (formerly the Petroleum Tank Management Association of Alberta), the Alberta Online Water Well Database, the Alberta Approval Viewer, the Alberta Environmental Site Assessment Repository (ESAR) database, SPIN2, the Alberta Conservation Information Management System (ACIMS), the CER REGDOCS database and Interactive Pipeline Map, the Alberta Biodiversity Monitoring Institute (ABMI) Wetland Inventory via AbaData, and the Alberta Energy Regulator (AER) via AbaData.
- Reviewed available historical information for the Site and the immediately surrounding areas, including aerial photographs, fire insurance plans (FIPs), and property listing directories



(i.e., Henderson Business Directories and/or TELUS Numerical Directories) for previous land use of the Site and the immediately surrounding areas.

- Conducted a personnel interview to evaluate the extent to which, and manner that, present and surrounding activities may impact the Site and the environment.
- Prepared a Phase I ESA report for the Site that identifies the potential for environmental impairment resulting from past or present land use on site and in the surrounding areas (this document).

2.0 SITE CHARACTERIZATION

2.1 Site Description

The 6.9-km NPS 4 Kakut Creek Lateral is located from LSD 06-29-076-04 W6M to LSD 02-25-076-04 W6M, approximately 47 km northeast of Grande Prairie, Alberta (Figure 1). Based on the pipeline alignment sheets (Appendix A) and information provided by NGTL GP, the steel pipeline was constructed circa 1985, with an external pipe coating of extruded polyethylene. The pipeline was discontinued in 1996. The associated right-of-way has a width of approximately 20 metres (m). The Site and surrounding areas are zoned as Titled Land by Birch Hills County (Appendix B).

The west end of the Site terminates at the Kakut Creek Receipt Meter Station boundary within LSD 06-29-076-04 W6M. This meter station is considered off site and not included as part of this assessment. The east end of the Site terminates at a side valve location within LSD 02-25-076-04 W6M (associated with the NPS 8 Teepee Creek Lateral and the NPS 10 Teepee Creek Lateral Loop), which is considered off site and not included as part of this assessment. Associated plot plans and alignment sheets are provided in Appendix A. Range Roads 41, 42A, and 44 intersect the east, central, and west portions of the Site, respectively, running north-south, and Highway 677 parallels the Site running east-west, approximately 60 m south of the east end and 700 m south of the west end. A farmstead is located within 300 m of the east end of the Site.

2.1.1 Topography, Physiography, and Surface Water

Based on information reviewed on Google Earth™ and the AbaData database, topography at the Site is anticipated to be relatively flat to undulating. Surface drainage is anticipated to be directed to watercourses and naturally low areas. Surface water features present within the surrounding area are discussed in Section 2.2.4.

2.2 Site Feature Details

The following sections outline the infrastructure and site feature details identified during the records review and file information / reporting review:

- The Site is situated on privately owned land and is operated by NGTL GP.
- No spills or releases were reported for the Site.

2.2.1 Sewage Disposal and Wastewater

The Site was not connected to sewage or wastewater infrastructure, and sewage or wastewater are not generated at the Site.



2.2.2 Pits and Lagoons

There were no pits or lagoons reported to be present at or surrounding the Site.

2.2.3 Sumps and Drains

No sumps or drains (e.g., stormwater sewer or collection basins) of environmental interest were associated with the Site.

2.2.4 Watercourses, Ditches, or Standing Water

Tributaries of Kakut Lake intersect the Site within LSD 08-27-076-04 W6M and within LSDs 07 and 08-28-076-04 W6M. Another tributary of Kakut Lake runs north-south within 100 m of the west end of the Site. Kakut Lake is approximately 430 m north of the Site according to AbaData. Wetlands reported in the area are discussed in Section 5.10.

2.2.5 Potable Water Supply

There was no potable water supply reported to be connected to the Site.

2.2.6 Wells

Wells, including water wells, disposal wells, and oil and gas wells were not reported to be present at the Site; oil and gas wells reported within the surrounding area are further discussed in Section 5.11.

2.2.7 Hazardous Materials, Storage Tanks, and Chemical Containers

There were no on-site tanks reported for the Site.

2.2.8 Staining and Stained Materials

A site visit was not conducted as part of this assessment; therefore, Trace cannot comment on the status of staining or stained materials.

2.2.9 Odours

A site visit was not conducted as part of this assessment; therefore, Trace cannot comment on the status of any odours.

2.2.10 Stressed Vegetation

A site visit was not conducted as part of this assessment; therefore, Trace cannot comment on the status of on-site vegetation.

2.2.11 Fill Areas

Imported backfill is not commonly used for pipeline construction, as excavated native soils are used to backfill the trench / replace grade, and as such, this study did not identify obvious indications of uncontrolled fill material placement on the Site.



2.2.12 Hydraulic Elevators/Hoists

There were no hydraulic elevators or hoists reported for the Site.

2.3 Off-site Observations

A site visit was not conducted as part of this assessment; therefore, Trace cannot comment on the visual state of neighbouring properties and associated structures. Oil and gas facilities reported within 100 m of the Site are further discussed in Section 5.11.

3.0 INTERVIEW

Trace personnel interviewed a site representative familiar with the history of the Site. The interview was conducted to obtain information regarding current and past activities and events that may have affected the environmental conditions at the Site.

Mark Blundell, P.Geo., CCEP, Senior Environmental Advisor at TC Energy, provided file information for the Site. Trace conducted the interview via email correspondence on July 10, 2024. The interviewee indicated that there were no CER-assigned remediation event numbers (REMs) associated with the Site, no known reported contamination, and no known leaks, ruptures, or other losses-of-containment associated with the Site. The findings of the personnel interviews, which have been incorporated into this report, are in general agreement with the records reviewed and site observations.

4.0 RECORDS REVIEW

4.1 Land Title Records

Trace personnel reviewed the current land titles for the properties on which the Site is situated. The land titles indicated that the Site is situated on privately owned land. There were utility rights-of-way, surface rights board orders, and caveats pertaining to surface leases associated with the land titles; however, there were no instruments of potential environmental interest warranting further investigation at the Site. Copies of the land titles for the easternmost and westernmost quarters are included in Appendix B.

4.2 Aerial/Satellite Photographs

Trace personnel reviewed aerial photographs of the Site for the years: 1979, 1988, 1995, 2006, 2013, and 2024 obtained from the Alberta Aerial Photographic Record System (<https://securexnet.env.gov.ab.ca/aprs/inquiry.jsp>) and Google Earth™ (www.google.com/earth). The aerial photographs are presented in Appendix C. The aerial photograph review and summary (Table A) are limited to developments of environmental interest. Due to the remote location of the Site, high-resolution aerial imagery was not available.



Table A: Summary of Aerial Photographs

Year	On Site	Off Site
1979 (partial photo)	<ul style="list-style-type: none">▪ The Site is located within both undeveloped forested and agricultural land use▪ Watercourses intersect the Site within the west portion and near the east end▪ A road intersects the Site within the west portion (Range Road 41) running north-south	<ul style="list-style-type: none">▪ Undeveloped forested and agricultural land use▪ Suspected pipeline right-of-way visible running north-south at the east end of the Site▪ A road parallels the Site approximately 60 m south of the east end▪ A trail is visible approximately 100 m north of the west end of the Site running parallel east-west▪ A suspected farmstead is visible approximately 250 m southwest of the east end of the Site
1988	<ul style="list-style-type: none">▪ Pipeline right-of-way visible along the path of the Site▪ Roads intersect the Site within the central and west portions (Range Roads 42A and 44, respectively) running north-south	<ul style="list-style-type: none">▪ Suspected meter station and wellsite visible near the west end of the Site; one suspected building is visible within the east half of the cleared meter station area and two structures are visible within the adjacent wellsite area▪ Disturbed area approximately 250 m southwest of the west end of the Site▪ A road (Range Road 41) intersects the east end of the Site
1995	<ul style="list-style-type: none">▪ No features of potential environmental interest	<ul style="list-style-type: none">▪ No features of potential environmental interest
2006	<ul style="list-style-type: none">▪ No features of potential environmental interest	<ul style="list-style-type: none">▪ No features of potential environmental interest
2013	<ul style="list-style-type: none">▪ There is a disturbed area around the east end of the Site	<ul style="list-style-type: none">▪ No infrastructure is visible at the suspected meter station site, or adjacent wellsite▪ A suspected structure is visible adjacent to the east end of the Site to the south
2024	<ul style="list-style-type: none">▪ No features of potential environmental interest	<ul style="list-style-type: none">▪ No features of potential environmental interest

5.0 REGULATORY INQUIRIES

Responses from the regulatory agencies are presented in Appendix D.

5.1 Birch Hills County

Trace personnel requested that Birch Hills County conduct a file search for available environmental information pertaining to the Site. There were no results that indicated the presence of potential or actual contamination associated with the Site and surrounding area.

Trace acquired an ownership map from the Birch Hills County website (<https://birchhillscounty.com/wp-content/uploads/2023/12/Birch-Hills-County-Map-2022.pdf>), provided in Appendix B.

5.2 Alberta Safety Codes Authority

Trace personnel contacted the ASCA regarding registered petroleum storage tanks (PSTs) at the Site. The search was conducted for select quarter sections on which the Site is situated. The ASCA response indicated that no PSTs were listed for these locations.



5.3 Alberta Online Water Well Database

The Alberta Online Water Well Database (<http://groundwater.alberta.ca/WaterWells/d/>) had one water well and related record reported within 300 m of the Site. The water well was drilled to a depth of 4.27 m for domestic use. The drill completion date was not available.

5.4 Alberta Online Approval Viewer

Trace personnel reviewed available approvals for the quarter sections that the Site intersects (<https://avw.alberta.ca/ApprovalViewer.aspx>). There were no approvals found for the Site or the surrounding area.

5.5 Alberta Environmental Site Assessment Repository Database

There were no records for review within 100 m of the Site (<http://www.esar.alberta.ca/>).

5.6 Alberta Government – Spatial Information System Website

The pipeline right-of-way associated with the Site, a road right-of-way intersecting the central portion of the Site, two pipeline rights-of-way intersecting the east end of the Site, and a meter station at the west end of the Site were identified within 100 m of the Site on SPIN2 (<https://alta.registries.gov.ab.ca/spinii/logon.aspx>). Oil and gas infrastructure is further discussed in Section 5.11.

5.7 Alberta Conservation Information Management System

Trace personnel conducted a search of the ACIMS for potential non-sensitive element occurrences, sensitive element occurrences, protected areas, and Crown reservations/notations in areas pertaining to known infrastructure in proximity to the Site (Sections 25 to 29-076-04 W6M). A non-sensitive occurrence of species Carolina wild geranium (*Geranium carolinianum*) was listed for Sections 26 to 28-076-04 W6M.

5.8 Canada Energy Regulator – Interactive Pipeline Map

Trace conducted a search of the CER Interactive Pipeline Map database (<https://www.cer-rec.gc.ca/en/safety-environment/industry-performance/interactive-pipeline/index.html>). The search did not indicate issues of potential environmental concern related to the Site.

5.9 Canada Energy Regulator – REGDOCS Database Search

Trace conducted a search of the CER REGDOCS database (<https://apps.cer-rec.gc.ca/REGDOCS/>) for potential notices of contamination and reported spills/incidents as they pertain to NGTL GP and the Site. There were no remediation notices or other indications of contamination identified for the Site. Only REMs issued after 2018 are publicly searchable. NGTL GP has confirmed that no known contamination or CER-issued REMs (pre-2018) are associated with the Site.

5.10 Alberta Biodiversity Monitoring Institute Wetland Inventory

Trace conducted a search of potential wetlands situated within 400 m of the Site via a layer in AbaData. There were no wetlands reported within 400 m of the Site. The nearest occurrence was the open water of Kakut Lake approximately 430 m north of the Site.



5.11 Alberta Energy Regulator – Oil and Gas-related Facilities, Spills, and Complaints

The AER maintains information on oil and gas wells, registered pipelines, and oil and gas facilities. The AER information was accessed through the AbaData database (www.abadata.ca), which is a web-based oilfield mapping program that uses current information to graphically display the location of oilfield and related facilities, and/or spills and complaints within Alberta. The following oil and gas-related wells, pipelines, facilities, spills, or complaints occurred within 400 m of the Site:

5.11.1 Pipelines

There were four high-pressure natural gas pipelines were reported within 400 m of the Site, including the natural gas pipeline associated with the Site, as noted in Appendix C. All four were reported within 100 m of the Site.

5.11.2 Wellsites

There are three oil and gas wellsites situated within 400 m of the Site, as noted in Appendix C. All three of these wellsites (100/01-26-076-04 W6M/0, 100/05-29-076-04 W6M/0, and 100/06-29-076-04 W6M/3) were reported within 100 m of the Site. One wellsite (100/06-29-076-04 W6M/3), which is located within 40 m of the east end of the Site, was drilled in 1983.

5.11.3 Facilities

Three oil and gas facilities were reported within 100 m of the Site, further detailed in Table C. Note that the NGTL GP Kakut Creek Meter Station was located adjacent to the west end of the Site, but was not reported in AbaData.

Table C: Facilities Within 100 Metres					
AER Facility ID No.	Name	Operator	Type	Status	Location & Approximate Distance to the Site
ABBT8020029	ANDERSON RYCROFT 6-29	CNRL	Multi-well gas battery	Suspended	LSD 06-29-076-04 W6M, 60 m south of the west end
ABGP0001493	ANDERSON RYCROFT	CNRL	Gas plant sweet	Abandoned	LSD 06-29-076-04 W6M, 60 m south of the west end
ABGS0003763	ANDERSON RYCROFT	CNRL	Gas gathering System	Suspended	LSD 06-29-076-04 W6M, 60 m south of the west end

5.11.4 Spills and Complaints

No spills or releases were reported for the Site. One complaint was reported for an operational impact – nuisance within LSD 06-28-076-04 W6M; however, although the complaint is suspected to relate to the Site, there is no specific environmental impact associated with the complaint.

5.11.5 Dispositions

There were no dispositions reported for oil and gas activities and roadway construction within 100 m of the Site.



5.12 Business Directories

The Site is situated in a rural area; therefore, there were no Henderson Business Directories and/or TELUS Numerical Directories for the Site and surrounding areas available for review.

5.13 Fire Insurance Plans

The Site are situated in a rural area; therefore, there were no FIPs for the Site and surrounding areas available for review.

6.0 PREVIOUS ENVIRONMENTAL REPORTING AND DOCUMENTS

The following previous environmental reports pertaining to the Site were obtained from the client:

6.1 Soil-Info Ltd. – Pipeline Reclamation Assessment of the Kakut Creek Lateral

- Soil-Info Ltd. prepared a Pipeline Reclamation Assessment of the Kakut Creek Lateral report in 2002 for the Site (SIL, 2001). The report summarized that the abandoned 6.98 km Kakut Creek Lateral met the pipeline reclamation criteria of the Alberta Certification Criteria for Pipelines-2001 Draft.

7.0 DISCUSSION AND CONCLUSIONS

No spills or releases are reported for the Site, and no on-site areas of existing and/or potential contamination were identified based on current or historical infrastructure, operations, and activities at the Site. Based on the information collected during this study, Trace has identified the following potential sources of contamination from off-site sources:

- The west end of the Site terminates at the south boundary of the Kakut Creek Receipt Meter Station within LSD 06-29-076-04 W6M. The east end of the Site terminates at a side valve location within LSD 02-25-076-04 W6M (associated with the NPS 8 Teepee Creek Lateral). This adjacent meter station and lateral are considered off site and not included as part of this assessment. No spills or releases were reported for this facility. The Kakut Creek Receipt Meter Station has been reclaimed and no infrastructure is visible remaining in aerial photographs; however, there is no Reclamation Certificate available for review for the meter station.
- There were four high-pressure natural gas pipelines were reported within 100 m of the Site. Based on the contents of the pipelines (natural gas), no further environmental investigation is warranted.
- Wellsite (100/06-29-076-04 W6M/3) is located within 40 m of the east end of the Site and was drilled in 1983. Based on the drilling date there is potential that historical oil and gas activities have impacted soil and/or groundwater conditions in the area.
- A suspended multi-well gas battery, suspended sweet gas plant, and suspended gas gathering system operated by CNRL are located approximately 60 m south of the west end of the Site within LSD 06-29-076-04 W6M. The potential for soil and/or groundwater impacts exists.

The Phase I ESA identified potential sources of contamination related to off-site sources within 100 m of the Site. Potential impacts associated with the current or historical operations at these off-site sources, if identified, would be unlikely to reach the Site. Based on this, and the obligation for licensees to address soil and/or groundwater impacts at their respective properties as part of operating the asset, and as part of



the process of pursuing a Reclamation Certificate, the potential for soil and/or groundwater impacts from these sources relative to the Site is considered to be generally low risk.

Based on the assessment findings, the Phase I ESA showed contamination associated with NGTL GP infrastructure, operations, or activities was not likely present at the Site.

8.0 QUALIFICATIONS OF THE ASSESSORS

John Forbes, B.Sc., P.Biol., is the Project Manager. John is an Environmental Scientist with Trace, and has over 10 years of experience conducting ESAs, remediation, groundwater monitoring, data evaluation, and technical report preparation related to the oil and gas industry, real estate, government, and industrial facilities.

Jennifer Green, B.A., prepared the report. Jennifer is a Project Administrator for Trace supporting the technical team preparing chemistry analytical tables, work plans, proposals, presentations, resumes, borehole logs, and technical reports for the oil and gas and the real estate and development market sectors. Jennifer is a registered member of the Association of Administrative Professionals.

Jason Hampson, B.Sc., P.Ag., assisted in the data evaluation and conducted a technical review of the report. Jason is a Principal Scientist and a Partner with Trace and has 24 years of experience in conducting ESAs, remediation, environmental liability assessments, and groundwater monitoring related to upstream oil and gas activities and land development. Jason specializes in developing cost-effective assessment and remediation solutions for complex contaminated sites. Through use of innovative guideline adjustment, remedial techniques, and risk management options, liability is effectively managed, and sites are quickly progressed towards regulatory closure.

9.0 LIMITATIONS OF REPORT

This report is based solely on the conditions which existed on site at the time of the assessment. The client, and any other parties using this report with the express written consent of the client and Trace, acknowledges that conditions affecting the environmental assessment of the Site can vary with time and that the conclusions and recommendations set out in this report are time sensitive.

The client, and any other party using this report with the express written consent of the client and Trace, also acknowledges that the conclusions and recommendations set out in this report are based on limited observations and testing on the Site and that conditions may vary across the Site which, in turn, could affect the conclusions and recommendations made.

The client acknowledges that Trace is neither qualified to make, nor is it making, any recommendations with respect to the purchase, sale, investment, or development of the Site, the decisions on which are the sole responsibility of the client.



10.0 CLOSURE AND QUALITY MANAGEMENT

We trust this meets your requirements. Should you have any questions or comments, please contact John Forbes (780.458.7787 or jforbes@traceassociates.ca) at our Edmonton (St. Albert) office.

Respectfully submitted,
Trace Associates Inc.

24-Jul-2024



24-Jul-2024

Prepared by:
Jennifer C. Green, B.A.
Project Administrator
403.217.3747
jgreen@traceassociates.ca

Reviewed by:
Jason C. Hampson, B.Sc., P.Ag.
Principal Scientist
403.217.3747
jhampson@traceassociates.ca

JG/jg:km



11.0 REFERENCES

CER (Canada Energy Regulator). (2020a). *Filing manual*. <https://www.cer-rec.gc.ca/en/applications-hearings/submit-applications-documents/filing-manuals/filing-manual/filing-manual.pdf>

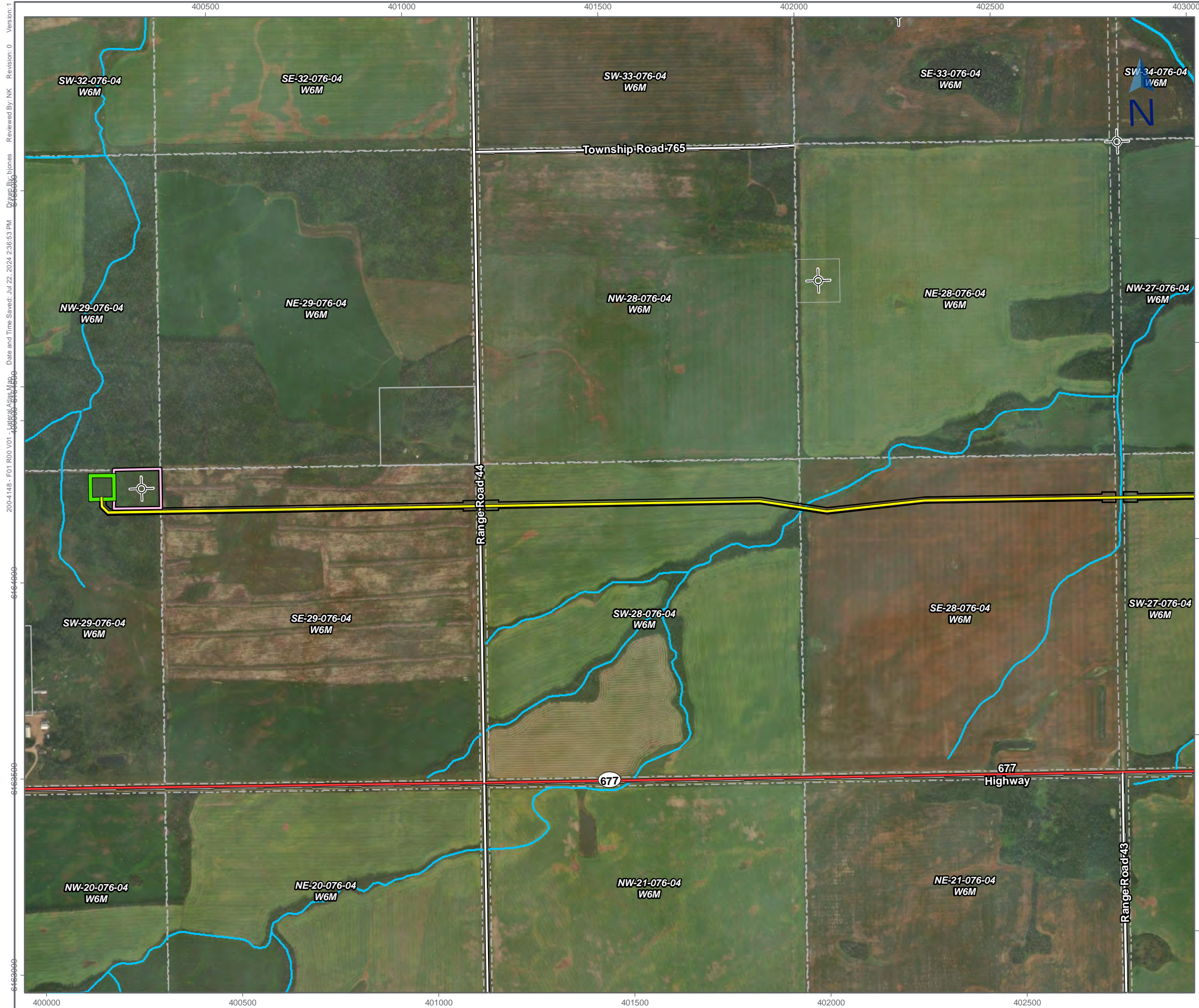
CER (Canada Energy Regulator). (2020b). *Remediation process guide*. <https://www.cer-rec.gc.ca/en/safety-environment/environment/remediation/remediation-process-guide-2020/>

CSA (Canadian Standards Association Group). (2001). *Phase I environmental site assessment, CAN/CSA-Z768-01 (R2022)*. <https://www.csagroup.org/store/product/Z768-01/>

SIL (Soil-Info Ltd.). (2001). *Pipeline reclamation assessment of the Kakut Creek lateral*.



Figures



Lateral Atlas Map

NGTL GP Ltd.
Phase I Environmental Site Assessment
 NPS 4 Kakut Creek Lateral
 LSD 06-29-076-04 W6M to LSD 02-25-076-04 W6M
 Near Grande Prairie, Alberta
 Trace Project No. 200-4148

Legend

- Kakut Creek Lateral (NPS 4 1985)
- Kakut Creek Meter Station
- Third-party Plant Site
- NGTL GP Ltd. Right-of-Way
- Parcel Data
- Approximate Wellhead Location
- Highway
- Road
- Primary Road
- Watercourse
- Permanent Waterbody
- Quarter Section



1:10,000 (At original plot size of 11x17)

Notes

1. Coordinate System: NAD 1983 UTM Zone 11N
2. Base Features: AbaData, CanVec, AltaLIS, NGTL GP Ltd.
3. Base Image: ESRI World Wayback Imagery, 2022
4. Inset Image: Canada Base Map - Transportation

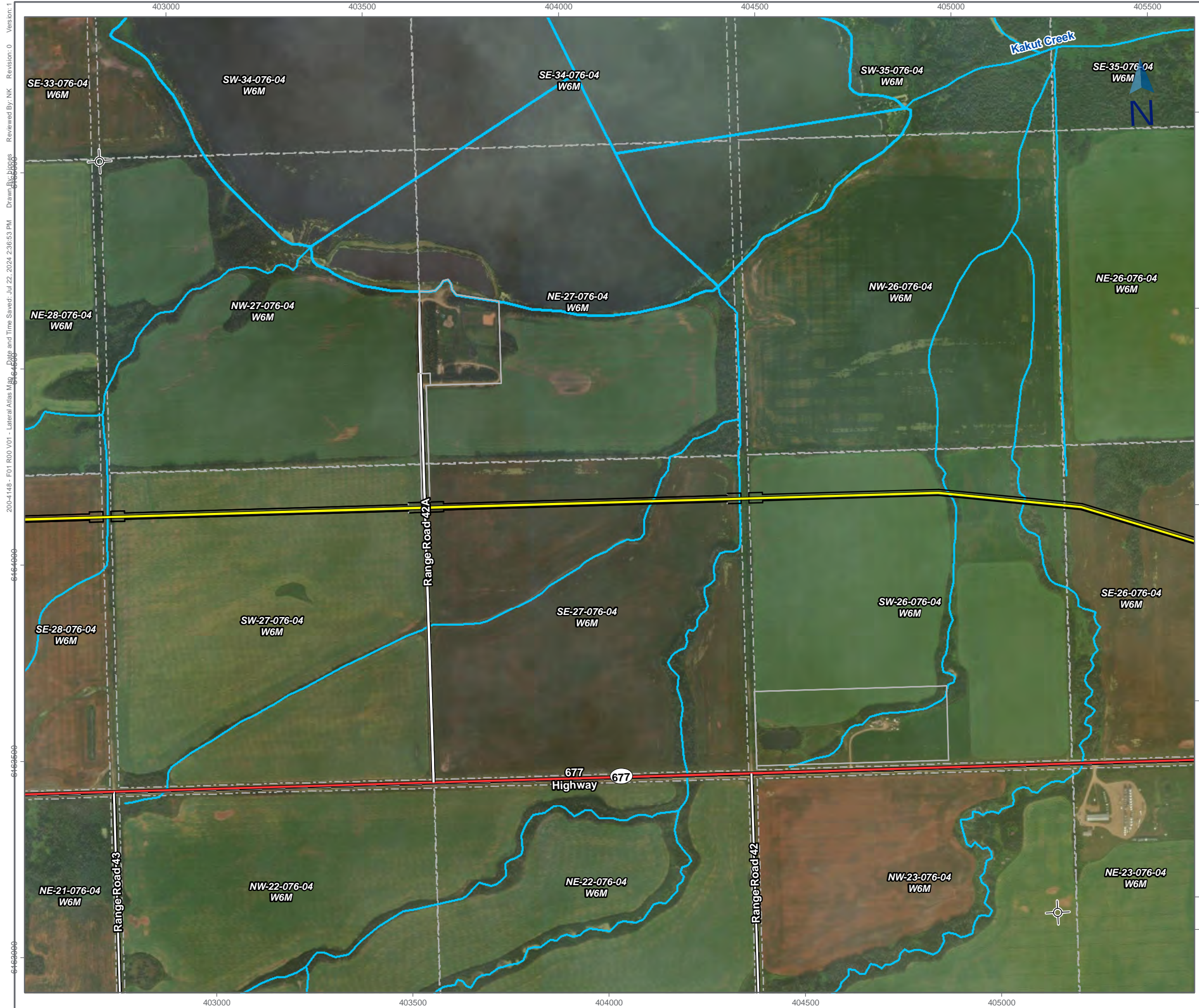


TRACE
 ASSOCIATES

Figure No.

1.1

200-4148 - F01 ROD V01 - 10/10/2024 2:36:53 PM - D:\proj\Bios\blones - Reviewed By: NK - Revision: 0 - Version: 1



Lateral Atlas Map

NGTL GP Ltd.
Phase I Environmental Site Assessment
 NPS 4 Kakut Creek Lateral
 LSD 06-29-076-04 W6M to LSD 02-25-076-04 W6M
 Near Grande Prairie, Alberta
 Trace Project No. 200-4148

Legend

- Kakut Creek Lateral (NPS 4 1985)
- NGTL GP Ltd. Right-of-Way
- Parcel Data
- Approximate Wellhead Location
- Highway
- Road
- Primary Road
- Watercourse Major
- Watercourse
- Permanent Waterbody
- Quarter Section



1:10,000 (At original plot size of 11x17)

Notes

1. Coordinate System: NAD 1983 UTM Zone 11N
2. Base Features: AbaData, CanVec, AltaLIS, NGTL GP Ltd.
3. Base Image: ESRI World Wayback Imagery, 2022
4. Inset Image: Canada Base Map - Transportation



TRACETM
 ASSOCIATES

Figure No.
1.2

200-4148 - F01 ROD V01 - Lateral Atlas Map - Date and Time Saved: Jul 22, 2024 2:36:53 PM
 Drawn By: jbiggs
 Reviewed By: NK
 Version: 1



Lateral Atlas Map

NGTL GP Ltd.
Phase I Environmental Site Assessment
 NPS 4 Kakut Creek Lateral
 LSD 06-29-076-04 W6M to LSD 02-25-076-04 W6M
 Near Grande Prairie, Alberta
 Trace Project No. 200-4148

Legend

- Kakut Creek Lateral (NPS 4 1985)
- - - NGTL Lateral Lines
- NGTL GP Ltd. Right-of-Way
- Parcel Data
- Approximate Wellhead Location
- Highway
- Road
- Primary Road
- Watercourse
- Quarter Section



Notes

1. Coordinate System: NAD 1983 UTM Zone 11N
2. Base Features: AbaData, CanVec, AltaLIS, NGTL GP Ltd.
3. Base Image: ESRI World Wayback Imagery, 2022
4. Inset Image: Canada Base Map - Transportation



Figure No.
1.3

Version: 1
 Revision: 0
 Drawn By: bjonnes
 Date: 2022-07-22 2:36:53 PM
 File Path: 200-4148 - F01 ROD V01 - Lateral Atlas Map

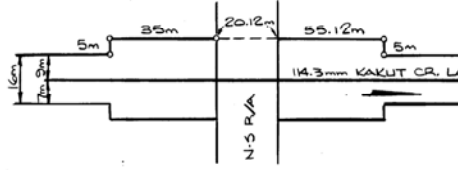
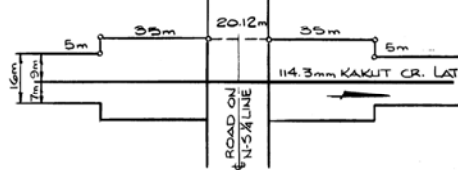
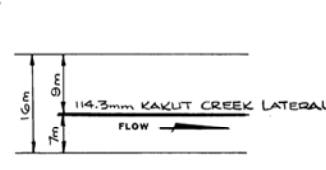
This map is for reference purposes only and is not to be used for surveying, engineering or legal purposes. No warranties, either expressed or implied, are made by Trace for the accuracy, completeness, reliability, usability or suitability of the information presented, as generated by Trace or other third party sources. Users should refer to the original source datasets to ascertain the usability of the information displayed.



Appendix A

Pipeline Alignment
Sheets and
Adjacent Meter Station
Plot Plans

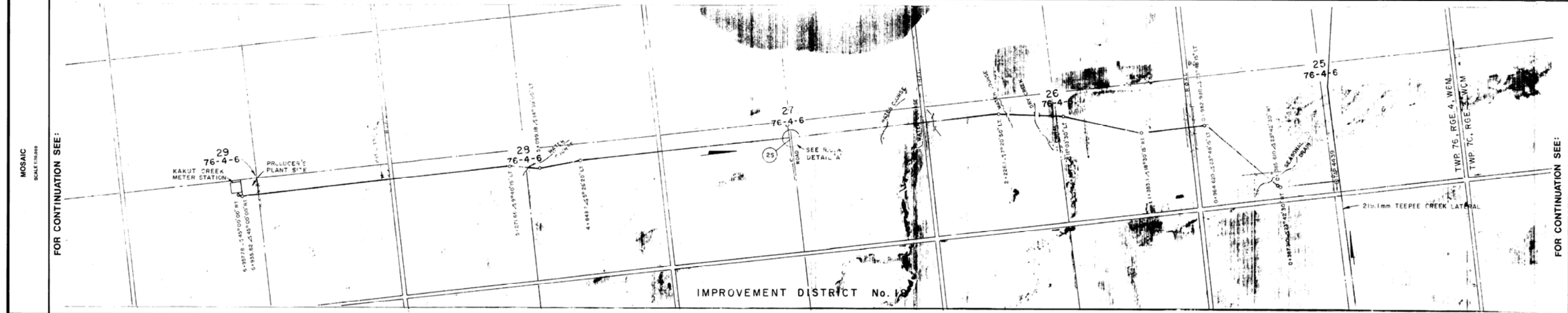
TRACT NO.		M/S	9794-10	9794-9	9794-8	9794-7	9794-6	9794-5	9794-4	9794-3	9794-2	9794-1				
OWNERSHIP			DMITRI BOYCHUK MARIANNE ELIE BOYCHUK	HOWARD CONRAD MURRAY	N/S R/A	DMITRI BOYCHUK MARIANNE ELIE BOYCHUK	KEVIN DAREL CLIFFE	N/S R/A	BETTY JEAN BOINKE	LANGNES CO-OPERATIVE FARM LTD.	N/S R/A	EVERETT NEIL PARLEE	DALE EDWARD WILSON	N/S R/A	ALFRED MALCOLM STEWART HALLOCK	REBECCA MURRAY WAZEL
HECTARES		0.360	0.277	1.32		1.33	1.33		1.34	ROAD	1.34	1.33	1.38		1.65	0.094
COVER (M)																



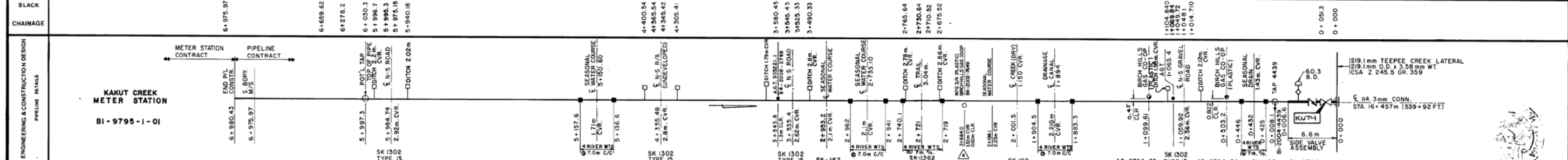
TOPSOIL CONSERVATION REFERENCE DRAWINGS:
 SK-1397 PIPELINE TRENCHING OPERATION SEQUENCE
 SK-1399 BELLHOLE EXCAVATION OPERATION SEQUENCE
 SK-1400 FOREIGN PIPELINE TRENCHING OPERATION SEQUENCE
 SK-1401 SIDE BEND TRENCHING OPERATION SEQUENCE

TOPSOIL STRIPPING WIDTH	ON AGRICULTURAL LAND STRIP DITCHWIDTH (SK 1397) EXCEPT AS FOLLOWS: 1) ROAD AND RAILWAY CROSSINGS SK-1399, 2) FOREIGN LINE CROSSINGS SK-1400, 3) SIDE BERMS SK-1401															
TOPSOIL STRIPPING DEPTH	0mm	50mm	150mm	150mm	150mm	150mm	150mm	150mm	150mm	150mm	150mm	150mm	150mm	150mm	150mm	150mm

VEGETATION	6+976	BUSH	6+228.5	CULT.	6+436	BUSH	5+995.3	ROAD	5+375.2	CULTIVATION	5+174.3	BUSH	5+132.5	CULTIVATION	4+545.5	BUSH	4+334.4	CULTIVATION	3+545.5	ROAD	3+344	CULT.	2+730.6	WINDROW	2+972	WINDROW	2+944	CULT.	2+730.6	WINDROW	2+723	WINDROW	1+703.7	CULT.	1+321.5	BUSH	1+069.4	ROAD	1+049.7	CULT.	0+497	CULT.	0+473	BUSH	0+403	CULT.	0+000
------------	-------	------	---------	-------	-------	------	---------	------	---------	-------------	---------	------	---------	-------------	---------	------	---------	-------------	---------	------	-------	-------	---------	---------	-------	---------	-------	-------	---------	---------	-------	---------	---------	-------	---------	------	---------	------	---------	-------	-------	-------	-------	------	-------	-------	-------



SLACK CHAINAGE	6+975.97	6+659.62	6+278.2	6+030.3	5+996.7	5+995.3	5+975.18	5+940.18	4+800.54	4+545.54	4+345.42	4+305.41	3+580.45	3+545.45	3+525.33	3+490.33	2+765.64	2+730.64	2+710.82	2+675.52	1+065.84	1+069.84	1+049.72	1+044.710	0+051.3	0+000
----------------	----------	----------	---------	---------	---------	---------	----------	----------	----------	----------	----------	----------	----------	----------	----------	----------	----------	----------	----------	----------	----------	----------	----------	-----------	---------	-------



PIPE INVENTORY			
NET	O.D.	WT.	SPECIFICATION
6973.83	114.3	3.2	CAZ2451GR200

MISCELLANEOUS MATERIALS			
QTY.	DESCRIPTION	NOVA PART NO.	REQ'N. No.
10	Warning Signs	017-515-1	HR.15997
1	Post for Warning Signs 1/2 Hardware	011-488-0	
1	2 Wire Test Lead SK-614	014-501-7	
1	4 Wire Test Lead SK-612		
20	4 Wire Test Lead SK-617	031-870-1	
20	CARRIAGE BOLTS	031-868-0	
20	TURNUTS	031-869-8	
2	WASHERS	025-959-4	HR.15897
2	SOCKET, NPS 1/2 (48.3) 3000* A108	025-959-4	HR.15908
20	RIVET VTS.		

REFERENCE DRAWINGS			
TITLE	DWG. No.	NOVA PART NO.	REQ'N. No.
Permit Map	G-9794-20		
Pipeline Profile	A1-9794-21		
SIDE VALVE ASSEMBLY	B1-9794-22		
X-ING BIRCH HILLS GAS COOP	A3-9794-24		
X-ING BIRCH HILLS GAS COOP	A3-9794-25		
TYPICAL ROAD CROSSING	SK-1392		
TYPICAL CREEK CROSSING	SK-1392		
KAKUT CREEK M/S PLOT PLAN	B1-9795-10		
TEEPEE CREEK ALIGNMENT	E-9049-24		

LEGEND	
	CARRIER PIPE
	HEAVY WALL CARRIER PIPE
	CASING PIPE
	WARNING SIGN ON POST
	PIPE CROSSING
	CABLE CROSSING
	RIVER WEIGHTS
	SWAMP WEIGHTS
	BLOCK VALVE ASSEMBLY
	2 WIRE TEST LEAD SK-614
	4 WIRE TEST LEAD SK-617
	4 WIRE BURIED TEST LEAD SK-612
	TRANSITION PIECE
	P.I. OR DEFLECTION POINT
	KILOMETRE POST
	AERIAL MARKER
	FENCE
	TELEPHONE GRAPH LINE
	POWER LINE
	PIPELINE
	CABLE

REVISIONS			
NO.	DESCRIPTION	DATE	BY
1	AS-BUILT 95-03-29	APR 18 1995	B46
2	AS-BUILT TAP 4+39 (RE-08-01) BY D. HESBITT	MAY 18 1995	B46
3	AS-BUILT AGT 30322.1 X-ING AT 3+543.8	SI02	LGP
4	ADDED AS BUILT P/L X-ING AT STA. 2+664.0	SI03	RN

APPROVALS	
DATE	DATE
<i>MW</i>	85-01-22
<i>APR</i>	85-01-30
<i>APR</i>	85-01-31

NOVA 3710TS AN ALBERTA CORPORATION

114.3 mm KAKUT CREEK LATERAL
AS-BUILT ALIGNMENT

ORIGINAL MICRO NO. 185003

OPERATING LICENCE No. _____
CONSTRUCTION PERMIT No. _____

MIN. TEST PRESSURE 10 570 kPa
MAX. OPERATING PRESSURE 8450 kPa

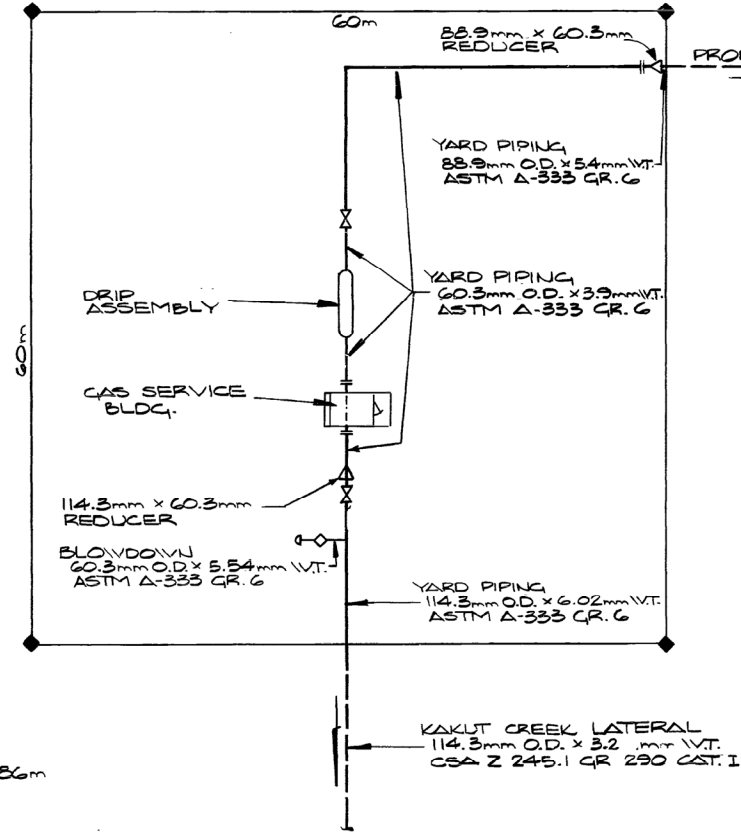
LIMITS OF SHEET

QTR.	SEC.	TWP.	RGE.	MER.
3	W	29	76	4
3	E	29	76	4

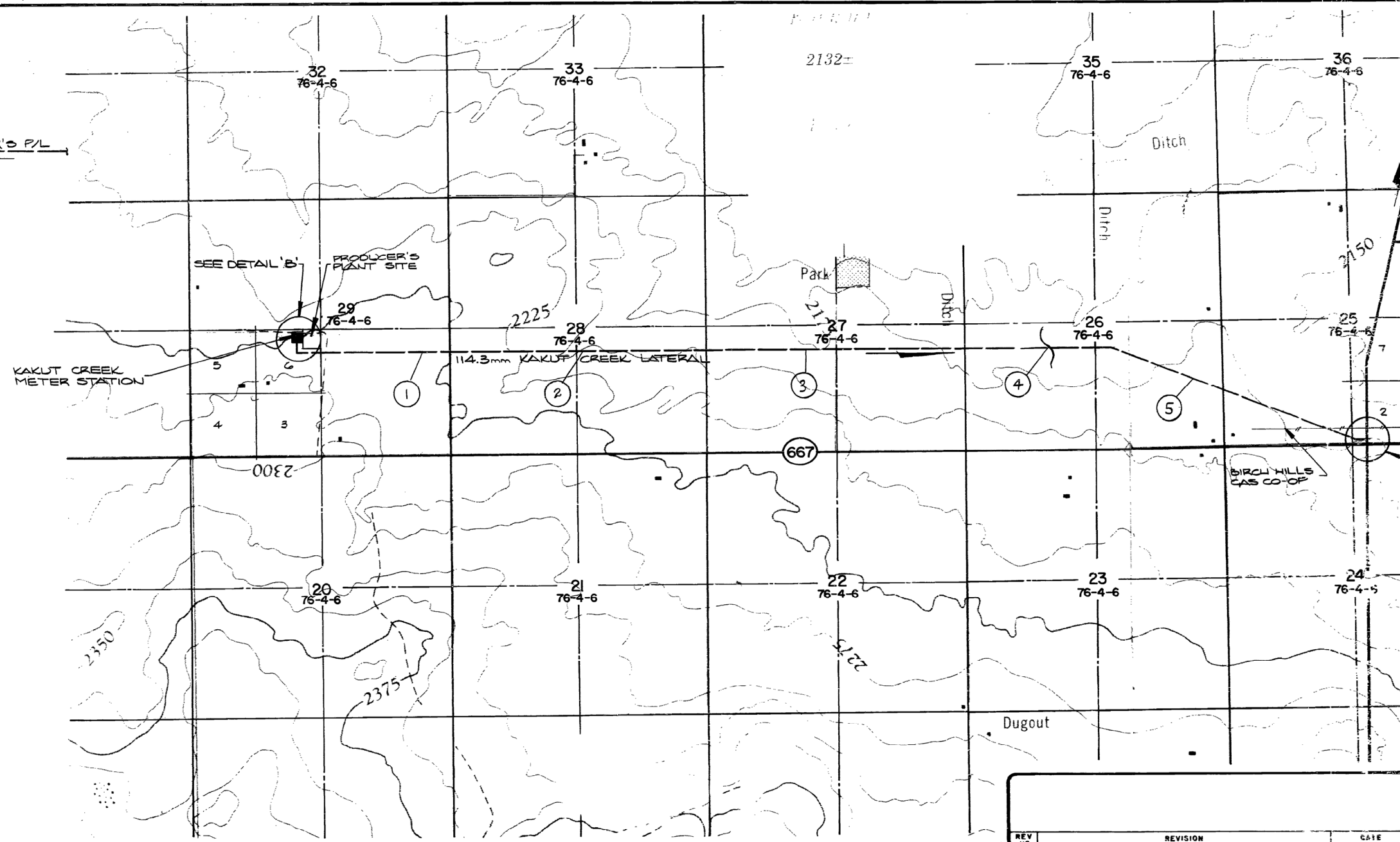
DWG. No. BI-9794-23



ELEV. 686m



DETAIL 'B'
 INSTALLATION NO. 1
 KAKUT CREEK METER STATION
 LSD. 6, SEC. 29, TWP. 76, RGE. 4, W. 6 M.
 N.T.S.



REV	REVISION	DATE



Appendix B

Birch Hills County Land
Ownership Map and
Current Land
Title Records



2022

COPYRIGHT : Birch Hills County
 Box 157
 Wanham, Alberta
 T0H 3P0
 Phone: (780) 694-3783
 Fax: (780) 694-3788
 Web Address: birchhillscounty.com

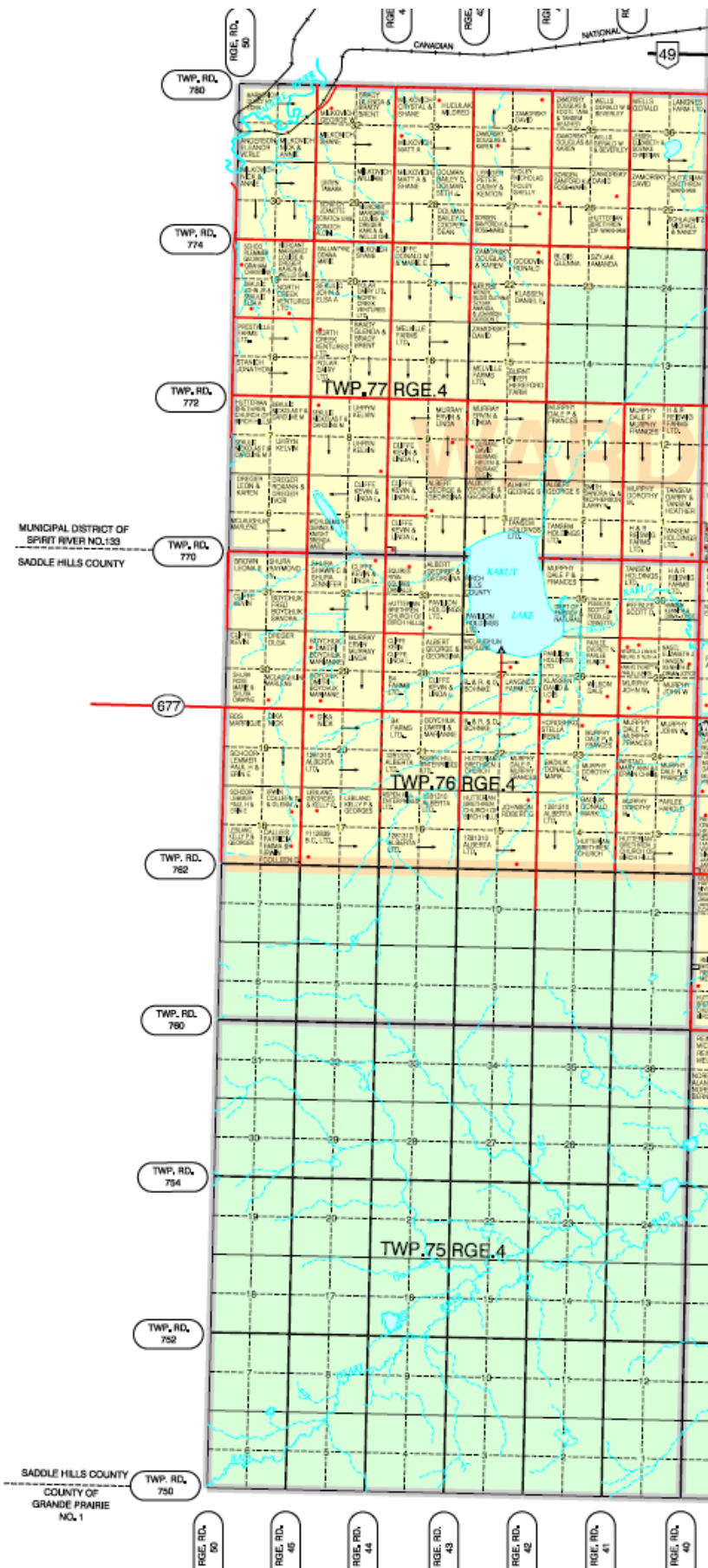
LEGEND

- PRIMARY HIGHWAY
- SECONDARY HIGHWAY
- DISTRICT ROADS - GRAVEL
- DIRT
- ROAD ALLOWANCE
- RAILWAY
- RAILWAY (ABANDONED)
- LAKE
- RIVER, CREEK
- TITLED LAND
- CROWN LAND
- ELECTORAL WARDS
- GRAZING AREA
- PEACE RIVER WILDLAND PROVINCIAL PARK
- CAMPGROUND
- RESIDENCE
- AIRPORT / AIRSTRIP
- LANDFILL / TRANSFER STATION
- WATER WELL

All rights reserved. Not to be copied in whole or in part.
 NOT RESPONSIBLE FOR ERRORS OR OMISSIONS
 PRODUCED FROM ALTA LIS DIGITAL FILE

PRINTED AUGUST, 2022.

Produced By





LAND TITLE CERTIFICATE

S
LINC SHORT LEGAL TITLE NUMBER
0021 501 623 6;4;76;29;SW 082 534 445

LEGAL DESCRIPTION

MERIDIAN 6 RANGE 4 TOWNSHIP 76
SECTION 29
QUARTER SOUTH WEST

CONAINING 64.7 HECTARES (160 ACRES) MORE OR LESS
EXCEPTING THEREOUT: A) ALL THAT PORTION DESCRIBED AS FOLLOWS:
COMMENCING AT A POINT ON THE SOUTH BOUNDARY OF SAID QUARTER SECTION
356 METRES EAST FROM THE SOUTH WEST CORNER THEREOF; THENCE NORTHERLY
AND AT RIGHT ANGLES THERETO 410 METRES; THENCE EASTERLY AND PARALLEL
TO THE SOUTH BOUNDARY 112 METRES; THENCE SOUTHERLY AND AT RIGHT ANGLES
TO THE LAST DESCRIBED COURSE 229 METRES; THENCE WESTERLY AND PARALLEL
TO THE SAID SOUTH BOUNDARY 30 METRES; THENCE SOUTHERLY AND AT RIGHT
ANGLES TO THE SOUTH BOUNDARY TO A POINT THEREON; THENCE WESTERLY ALONG
THE SOUTH BOUNDARY TO THE POINT OF COMMENCEMENT,
CONTAINING 4.05 HECTARES (10.00 ACRES) MORE OR LESS
B) 0.728 HECTARES (1.80 ACRES) MORE OR LESS, AS SHOWN ON ROAD PLAN 8320523
EXCEPTING THEREOUT ALL MINES AND MINERALS
AND THE RIGHT TO WORK THE SAME

ESTATE: FEE SIMPLE

MUNICIPALITY: BIRCH HILLS COUNTY

REFERENCE NUMBER: 082 534 444 +4

REGISTERED OWNER(S)
REGISTRATION DATE (DMY) DOCUMENT TYPE VALUE CONSIDERATION

082 534 445 09/12/2008 TRANSFER OF LAND SEE INSTRUMENT

OWNERS

DMITRI BOYCHUK

AND

MARIANNE ELLIE BOYCHUK

BOTH OF:

RR1

WOKING

ALBERTA T0H 3V0

(CONTINUED)

AS JOINT TENANTS

ENCUMBRANCES, LIENS & INTERESTS

REGISTRATION

NUMBER	DATE (D/M/Y)	PARTICULARS
852 047 431	11/03/1985	SURFACE RIGHTS BOARD ORDER "ORDER NO. E496/85"
932 181 456	24/06/1993	UTILITY RIGHT OF WAY GRANTEE - BIRCH HILLS GAS CO-OP LTD.
002 117 844	04/05/2000	CAVEAT RE : RIGHT OF WAY AGREEMENT CAVEATOR - ATCO ELECTRIC LTD. ATTENTION: LAND & PROPERTIES, 10035-105 STREET EDMONTON ALBERTA T5J2V6 AGENT - LORRIE SCHMITZ
022 022 832	21/01/2002	CAVEAT RE : SURFACE LEASE UNDER 20 ACRES CAVEATOR - LONG RUN EXPLORATION LTD. PO BOX 20009 BOW VALLEY CALGARY ALBERTA T2P4H3 (DATA UPDATED BY: TRANSFER OF CAVEAT 072526218) (DATA UPDATED BY: TRANSFER OF CAVEAT 112296547) (DATA UPDATED BY: TRANSFER OF CAVEAT 122051864) (DATA UPDATED BY: CHANGE OF NAME 132086360)
052 224 310	07/06/2005	CAVEAT RE : SURFACE LEASE UNDER 20 ACRES CAVEATOR - LONG RUN EXPLORATION LTD. PO BOX 20009 BOW VALLEY CALGARY ALBERTA T2P4H3 AGENT - BRITT RESOURCES LTD. (DATA UPDATED BY: CHANGE OF ADDRESS 092265766) (DATA UPDATED BY: CHANGE OF NAME 122416527)

TOTAL INSTRUMENTS: 005

(CONTINUED)

THE REGISTRAR OF TITLES CERTIFIES THIS TO BE AN
ACCURATE REPRODUCTION OF THE CERTIFICATE OF
TITLE REPRESENTED HEREIN THIS 19 DAY OF JULY,
2024 AT 03:43 P.M.

ORDER NUMBER: 51125072

CUSTOMER FILE NUMBER:



END OF CERTIFICATE

THIS ELECTRONICALLY TRANSMITTED LAND TITLES PRODUCT IS INTENDED
FOR THE SOLE USE OF THE ORIGINAL PURCHASER, AND NONE OTHER,
SUBJECT TO WHAT IS SET OUT IN THE PARAGRAPH BELOW.

THE ABOVE PROVISIONS DO NOT PROHIBIT THE ORIGINAL PURCHASER FROM
INCLUDING THIS UNMODIFIED PRODUCT IN ANY REPORT, OPINION,
APPRAISAL OR OTHER ADVICE PREPARED BY THE ORIGINAL PURCHASER AS
PART OF THE ORIGINAL PURCHASER APPLYING PROFESSIONAL, CONSULTING
OR TECHNICAL EXPERTISE FOR THE BENEFIT OF CLIENT(S).



LAND TITLE CERTIFICATE

S
LINC SHORT LEGAL TITLE NUMBER
0018 403 691 6;4;76;25;SW 112 164 941

LEGAL DESCRIPTION

THE SOUTH WEST QUARTER OF SECTION TWENTY FIVE (25)
TOWNSHIP SEVENTY SIX (76)
RANGE FOUR (4)
WEST OF THE SIXTH MERIDIAN,
CONTAINING 64.7 HECTARES (160 ACRES) MORE OR LESS.
EXCEPTING THEREOUT: 0.810 HECTARES (2.00 ACRES)
MORE OR LESS, AS SHOWN ON ROAD PLAN 8320523.
EXCEPTING THEREOUT ALL MINES AND MINERALS
AND THE RIGHT TO WORK THE SAME

ESTATE: FEE SIMPLE

MUNICIPALITY: BIRCH HILLS COUNTY

REFERENCE NUMBER: 112 164 940

REGISTRATION	DATE (DMY)	REGISTERED OWNER(S) DOCUMENT TYPE	VALUE	CONSIDERATION
112 164 941	03/06/2011	TRANSFER OF LAND	\$150,000	\$150,000

OWNERS

JOHN WELLESLEY MURPHY
OF RR 1
WANHAM
ALBERTA T0H 3P0

ENCUMBRANCES, LIENS & INTERESTS

REGISTRATION NUMBER	DATE (D/M/Y)	PARTICULARS
752 117 054	03/09/1975	UTILITY RIGHT OF WAY GRANTEE - BIRCH HILLS GAS CO-OP LTD.
852 047 500	11/03/1985	SURFACE RIGHTS BOARD ORDER

REGISTRATION

NUMBER	DATE (D/M/Y)	PARTICULARS
--------	--------------	-------------

IN FAVOUR OF - NOVA AN ALBERTA CORPORATION.

"ORDER NO. E489/85"

972 237 199	11/08/1997	UTILITY RIGHT OF WAY GRANTEE - NGTL GP LTD. AS TO PORTION OR PLAN:9620499 TAKES PRIORITY DATE OF CAVEAT 952202961 3 AUG 95 (DATA UPDATED BY: TRANSFER OF UTILITY RIGHT OF WAY 242161361)
-------------	------------	---

112 164 943	03/06/2011	MORTGAGE MORTGAGEE - FARM CREDIT CANADA. 2ND FLOOR, 12040-149 STREET SW EDMONTON ALBERTA T5V1P2 ORIGINAL PRINCIPAL AMOUNT: \$150,000
-------------	------------	---

142 023 155	21/01/2014	MORTGAGE MORTGAGEE - FARM CREDIT CANADA. 2ND FLOOR, 12040-149 STREET NW EDMONTON ALBERTA T5V1P2 ORIGINAL PRINCIPAL AMOUNT: \$170,000
-------------	------------	---

TOTAL INSTRUMENTS: 005

THE REGISTRAR OF TITLES CERTIFIES THIS TO BE AN
ACCURATE REPRODUCTION OF THE CERTIFICATE OF
TITLE REPRESENTED HEREIN THIS 19 DAY OF JULY,
2024 AT 03:43 P.M.

ORDER NUMBER: 51125072

CUSTOMER FILE NUMBER:



END OF CERTIFICATE

THIS ELECTRONICALLY TRANSMITTED LAND TITLES PRODUCT IS INTENDED
FOR THE SOLE USE OF THE ORIGINAL PURCHASER, AND NONE OTHER,
SUBJECT TO WHAT IS SET OUT IN THE PARAGRAPH BELOW.

THE ABOVE PROVISIONS DO NOT PROHIBIT THE ORIGINAL PURCHASER FROM
INCLUDING THIS UNMODIFIED PRODUCT IN ANY REPORT, OPINION,
APPRAISAL OR OTHER ADVICE PREPARED BY THE ORIGINAL PURCHASER AS
PART OF THE ORIGINAL PURCHASER APPLYING PROFESSIONAL, CONSULTING
OR TECHNICAL EXPERTISE FOR THE BENEFIT OF CLIENT(S).

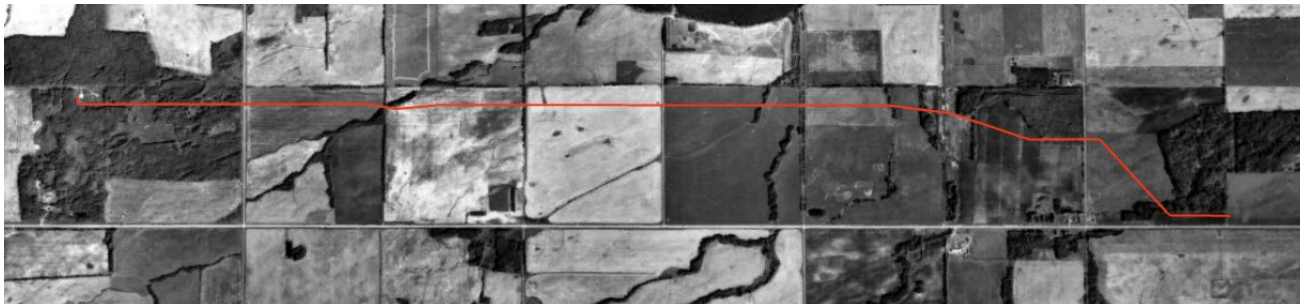


Appendix C

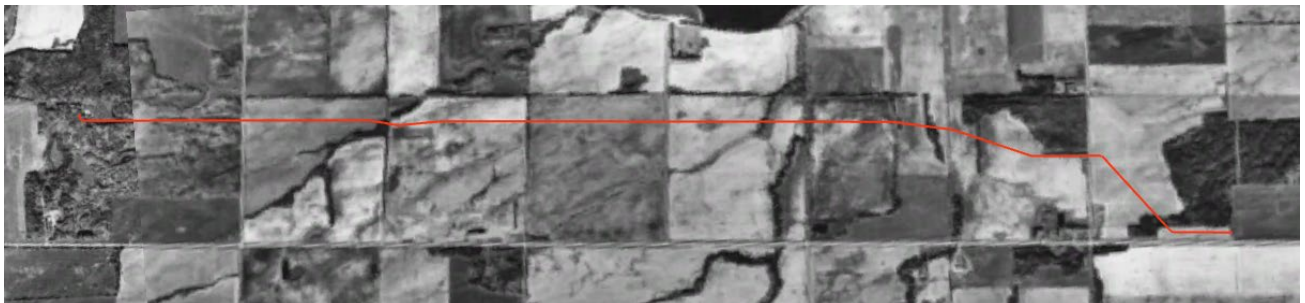
Aerial Photographs



Aerial Photograph 1: 1979



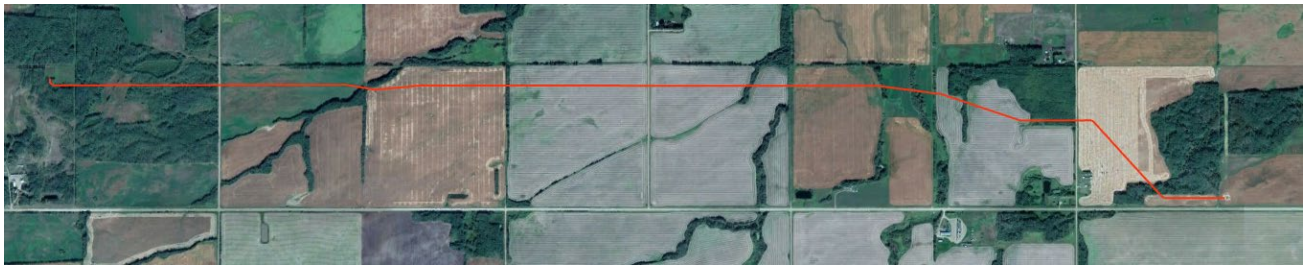
Aerial Photograph 2: 1988



Aerial Photograph 3: 1995



Aerial Photograph 4: 2006



Aerial Photograph 5: 2013



Aerial Photograph 6: 2024



Appendix D

Regulatory Inquiry
Information

From: [Michael Coy](#)
To: [Jennifer Green](#); [Bailey Smith](#)
Subject: Re: File Search Request - Trace Project No. 200-4148
Date: July 16, 2024 2:38:56 PM
Attachments: [image004.png](#)
[image005.png](#)
[image006.png](#)
[Outlook-41etnybx.png](#)

Hi Jennifer,

It was located on the east side of RR43 south of Sec. 677.
Land Location SW22-76-4-W6

Have a great day!



Michael Coy | Director of Public Works | Birch Hills County
4601 50th St | Box 157 | Wanham | AB | Canada | T0H 3P0
Office: 780.694.3793 | Cell: 780.512.3085 | Fax: 780.694.3788
dpw@birchhillscounty.com | www.birchhillscounty.com

We intend this electronic mail message only for the person or entity named in the address field. This message may contain information that is privileged, confidential or exempt from disclosure under applicable law. If you are not the addressee or an employee or agent responsible for delivering this message to the addressee, please notify us immediately by phone.

From: Jennifer Green <jgreen@traceassociates.ca>
Sent: Tuesday, July 16, 2024 1:31 PM
To: Bailey Smith <development@birchhillscounty.com>
Cc: Michael Coy <dpw@birchhillscounty.com>
Subject: RE: File Search Request - Trace Project No. 200-4148

Thanks Bailey,

Do you know where exactly the dynamite storage facility was located? (which quarter section, even if it's approximate, I just need to figure out if it's within 100 m of the pipeline).

Thanks,

JENNIFER C. GREEN, B.A. (She/Her/Hers)

Project Administrator, Trace Associates Inc.
Lincoln Park Centre, Suite 300, 37 Richard Way SW, Calgary, Alberta T3E 7M8
587.779.2893 | 1.877.418.7223 | jgreen@traceassociates.ca
www.traceassociates.ca

From: Bailey Smith <development@birchhillscounty.com>
Sent: Tuesday, July 16, 2024 1:09 PM
To: Jennifer Green <jgreen@traceassociates.ca>
Cc: Michael Coy <dpw@birchhillscounty.com>
Subject: Re: File Search Request - Trace Project No. 200-4148

Hello Jennifer

No historic or current landfills in this area. Our Manager of Infrastructure recalls that there may be a dynamite storage facility in the area but he is unsure if it is still active. I do believe that Kakut lake is considered an environmentally sensitive area.

Best,



Bailey Smith
Development Officer
Legislative Services Coordinator
Executive Assistant
Email : baileys@birchhillscounty.com
Phone : 780-694-3793
Box 157, 4601 - 50th Street Wanham
AB, T0H 3P0
www.birchhillscounty.com

From: Jennifer Green <jgreen@traceassociates.ca>
Sent: Monday, July 15, 2024 2:13 PM
To: Bailey Smith <development@birchhillscounty.com>; Larry Davidson <cao@birchhillscounty.com>
Cc: Michael Coy <dpw@birchhillscounty.com>
Subject: File Search Request - Trace Project No. 200-4148

Hi Bailey,

Trace Associates Inc. has been retained to complete another Phase I Environmental Site Assessment for the Kakut Creek Lateral which is only 6.9 km long within Birch Hills County through the following LSDs:

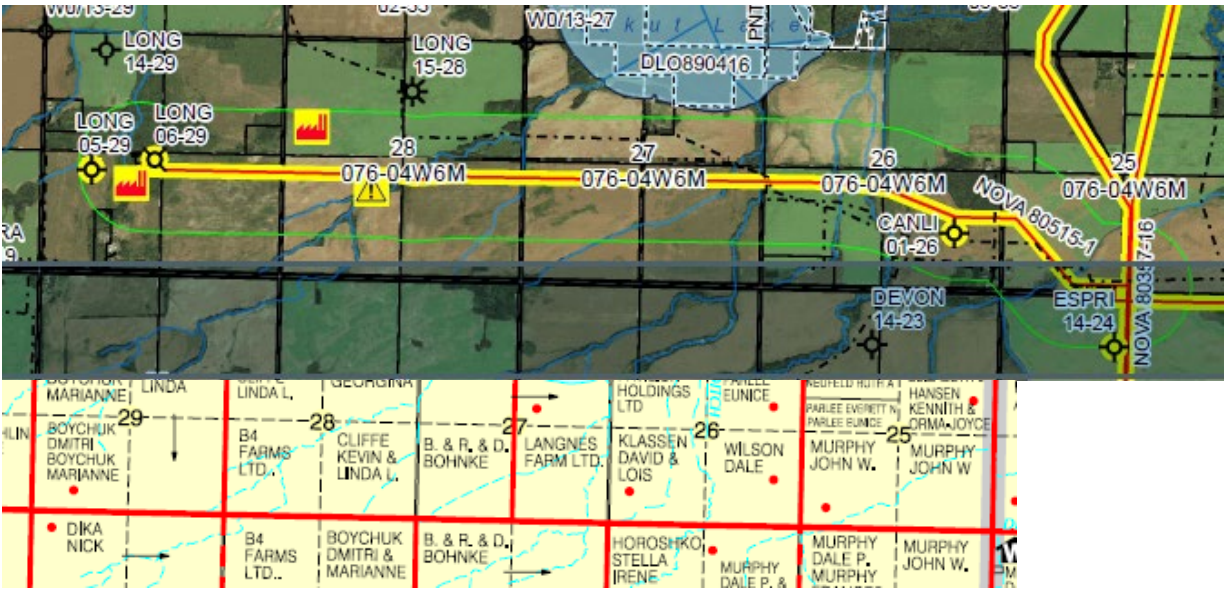
06-29-076-04 W6M,
SE & SW¹/₄-28-076-04 W6M
SE & SW¹/₄-27-076-04 W6M
SE & SW¹/₄-26-076-04 W6M
SW¹/₄-28-076-04 W6M

We are requesting records on the following topics:

- Presence of current or historical landfills
- Environmental reports
- Approximate dates of construction (if available)
- Presence of current or historical above-ground or underground storage tanks (possibly need to contact Fire Department)
- Bylaw infractions

What was provided before is sufficient – this property is adjacent to the other one if that helps.

Map clips for reference (one is from AbaData, the other a clip of the county landownership map for comparison):



Please let me know if you have any questions,

Thanks,

JENNIFER C. GREEN, B.A. (She/Her/Hers)

Project Administrator, Trace Associates Inc.
 Lincoln Park Centre, Suite 300, 37 Richard Way SW, Calgary, Alberta T3E 7M8
 587.779.2893 | 1.877.418.7223 | jgreen@traceassociates.ca
www.traceassociates.ca



**Safety
Codes
Council**

Alberta Safety Codes Authority

July 19, 2024

Jennifer Green
Trace Associates Inc.
300-37 Richard Way SW
Calgary, AB T3E 7M8

Email: jgreen@traceassociates.ca

Re: ASCA Storage Tank Search - Your File# 200-4148 Order ID# 11940

Dear Jennifer,

As per your search requests received July 19, 2024, Alberta Safety Codes Authority (ASCA) has searched the storage tank database for existing and former installations of storage tank systems, as defined by the Fire Code, including those known to be inside structures at the following address(es):

1. SW-29-076-04-6
2. SW-25-076-04-5

The search of the storage tank database determined **no records** were available for the address(es) requested.

The Freedom of Information and Protection of Privacy Act governs the information provided. Please note that the database is not complete. The main limitation of the database is that it only includes, information reported through registration and permitting, or a survey of abandoned sites completed in 1992 and should not be considered a comprehensive inventory of all past or present storage tank sites. ASCA's storage tank systems database is solely maintained based on information provided by owners, and or operators of storage tank systems; therefore, the database may not reflect information related to all existing or former storage tank systems in Alberta. Further information on storage tank systems or investigations involving a spill/release or contamination may be filed with the local fire service or Alberta Environment.

Regards

Aranya Hewapathirane

STS Associate

Alberta Safety Codes Authority

Safety Codes Council | safetycodes.ab.ca

desk 587.415.1256 | toll-free 1-888-413-0099

.....

Water Well Report



WATER WELL #	OWNER	LOCATION		DISTANCE	METHOD OF DRILLING	DATE WORK STARTED	TOP CASING TO GROUND (cm)	PUMP RATE (igpm)	PUMP TYPE	WELL DISINFECTED?
	CONTRACTOR	LATITUDE	LONGITUDE	LOT / BLOCK / PLAN #	TYPE OF WORK	DATE WORK COMPLETED	# OF CHEMISTRIES	INTAKE DEPTH (m)	PUMP MODEL / HP	POTABILITY SAMPLED/SENT ?
	DRILLER RESPONSIBLE	ELEVATION (m)		ADDITIONAL INFO	DEPTH DRILLED (m)	PROPOSED USE	ARTESIAN WELL?	PUMP INSTALLED?	SALINE WATER?	GAS?
	COMMENTS				FINISHED DEPTH (m)	DATE RECEIVED	ARTESIAN FLOW RATE (igpm)	PUMP DEPTH (m)	SALINE WATER DEPTH (m)	GAS DEPTH (m)
444397	WILSON, DAVID	SE-26-76-4 W6M			Hand Dug		0	0.00		No
	UNKNOWN DRILLER	55.610581	-118.498289		Chemistry		2	0		No / No
	UNKNOWN DRILLER	667.51			4.27	Domestic	No	No	No	No
					0		0	0	0	0

[Skip To Navigation](#)

[Skip To Content](#)



- [Using This Site](#)
- [Ministries](#) |
- [Contact Government](#) |
- [Government of Alberta Home](#) |

Authorization Viewer

Traditional Agriculture Registration Viewer

Public Notices Viewer


Help

Authorization Viewer - Search Results

For Water Act approvals, amendments and Code of Practice notifications issued by the Alberta Energy Regulator during or after 2018, please refer to the following link [OneStop Application Query Tool \(aer.ca\)](#).

The Search Used the Following Values:

Legal Land Location:	S 29-076-04-W6
Act / Document Type:	Water Act, EPEA
Show Inactive Authorizations:	Yes

The resulting Authorizations based on the search criteria will be displayed below. A  will appear next to the Authorization when documentation is available for viewing or downloading. Please click [Viewer Help](#) if you encounter problems viewing the Authorization document.

0 Result(s)

Clear & Return

Comments regarding the Authorization Viewer page may be directed to the Regulatory Programs Branch RAC.Environment@gov.ab.ca.



©1995 - 2023 Government of Alberta [Copyright and Disclaimer](#) [Using This Site](#) [Privacy](#)

[Skip To Navigation](#)

[Skip To Content](#)



- [Using This Site](#)
- [Ministries](#) |
- [Contact Government](#) |
- [Government of Alberta Home](#) |

Authorization Viewer

Traditional Agriculture Registration Viewer

Public Notices Viewer


Help

Authorization Viewer - Search Results

For Water Act approvals, amendments and Code of Practice notifications issued by the Alberta Energy Regulator during or after 2018, please refer to the following link [OneStop Application Query Tool \(aer.ca\)](#).

The Search Used the Following Values:

Legal Land Location:	S 28-076-04-W6
Act / Document Type:	Water Act, EPEA
Show Inactive Authorizations:	Yes

The resulting Authorizations based on the search criteria will be displayed below. A  will appear next to the Authorization when documentation is available for viewing or downloading. Please click [Viewer Help](#) if you encounter problems viewing the Authorization document.

0 Result(s)

Clear & Return

Comments regarding the Authorization Viewer page may be directed to the Regulatory Programs Branch RAC.Environment@gov.ab.ca.



©1995 - 2023 Government of Alberta [Copyright and Disclaimer](#) [Using This Site](#) [Privacy](#)

[Skip To Navigation](#)

[Skip To Content](#)



- [Using This Site](#)
- [Ministries](#) |
- [Contact Government](#) |
- [Government of Alberta Home](#) |

Authorization Viewer

Traditional Agriculture Registration Viewer

Public Notices Viewer


Help

Authorization Viewer - Search Results

For Water Act approvals, amendments and Code of Practice notifications issued by the Alberta Energy Regulator during or after 2018, please refer to the following link [OneStop Application Query Tool \(aer.ca\)](#).

The Search Used the Following Values:

Legal Land Location:	S 27-076-04-W6
Act / Document Type:	Water Act, EPEA
Show Inactive Authorizations:	Yes

The resulting Authorizations based on the search criteria will be displayed below. A  will appear next to the Authorization when documentation is available for viewing or downloading. Please click [Viewer Help](#) if you encounter problems viewing the Authorization document.

0 Result(s)

Clear & Return

Comments regarding the Authorization Viewer page may be directed to the Regulatory Programs Branch RAC.Environment@gov.ab.ca.



©1995 - 2023 Government of Alberta [Copyright and Disclaimer](#) [Using This Site](#) [Privacy](#)

[Skip To Navigation](#)

[Skip To Content](#)



- [Using This Site](#)
- [Ministries](#) |
- [Contact Government](#) |
- [Government of Alberta Home](#) |

Authorization Viewer

Traditional Agriculture Registration Viewer

Public Notices Viewer


Help

Authorization Viewer - Search Results

For Water Act approvals, amendments and Code of Practice notifications issued by the Alberta Energy Regulator during or after 2018, please refer to the following link [OneStop Application Query Tool \(aer.ca\)](#).

The Search Used the Following Values:

Legal Land Location:	S 26-076-04-W6
Act / Document Type:	Water Act, EPEA
Show Inactive Authorizations:	Yes

The resulting Authorizations based on the search criteria will be displayed below. A  will appear next to the Authorization when documentation is available for viewing or downloading. Please click [Viewer Help](#) if you encounter problems viewing the Authorization document.

0 Result(s)

Clear & Return

Comments regarding the Authorization Viewer page may be directed to the Regulatory Programs Branch RAC.Environment@gov.ab.ca.



©1995 - 2023 Government of Alberta [Copyright and Disclaimer](#) [Using This Site](#) [Privacy](#)

[Skip To Navigation](#)

[Skip To Content](#)



- [Using This Site](#)
- [Ministries](#) |
- [Contact Government](#) |
- [Government of Alberta Home](#) |

Authorization Viewer

Traditional Agriculture Registration Viewer

Public Notices Viewer

Help

Authorization Viewer - Search Results

For Water Act approvals, amendments and Code of Practice notifications issued by the Alberta Energy Regulator during or after 2018, please refer to the following link [OneStop Application Query Tool \(aer.ca\)](#).

The Search Used the Following Values:

Legal Land Location:	SW 25-076-04-W6
Act / Document Type:	Water Act, EPEA
Show Inactive Authorizations:	Yes

The resulting Authorizations based on the search criteria will be displayed below. A  will appear next to the Authorization when documentation is available for viewing or downloading. Please click [Viewer Help](#) if you encounter problems viewing the Authorization document.

0 Result(s)

Clear & Return

Comments regarding the Authorization Viewer page may be directed to the Regulatory Programs Branch RAC.Environment@gov.ab.ca.



©1995 - 2023 Government of Alberta [Copyright and Disclaimer](#) [Using This Site](#) [Privacy](#)

- [Search Form](#)
- [Map Search](#)

A designated location identifies a site where Environment and Protected Areas has received scientific or technical information for that site and does not imply anything regarding the current state or condition of the site. Please refer to the studies and reports to determine the condition of the site.

ATS

Meridian W - 6
 Range 4
 Township 76
 Section 29
 [Quarter] SW

Search

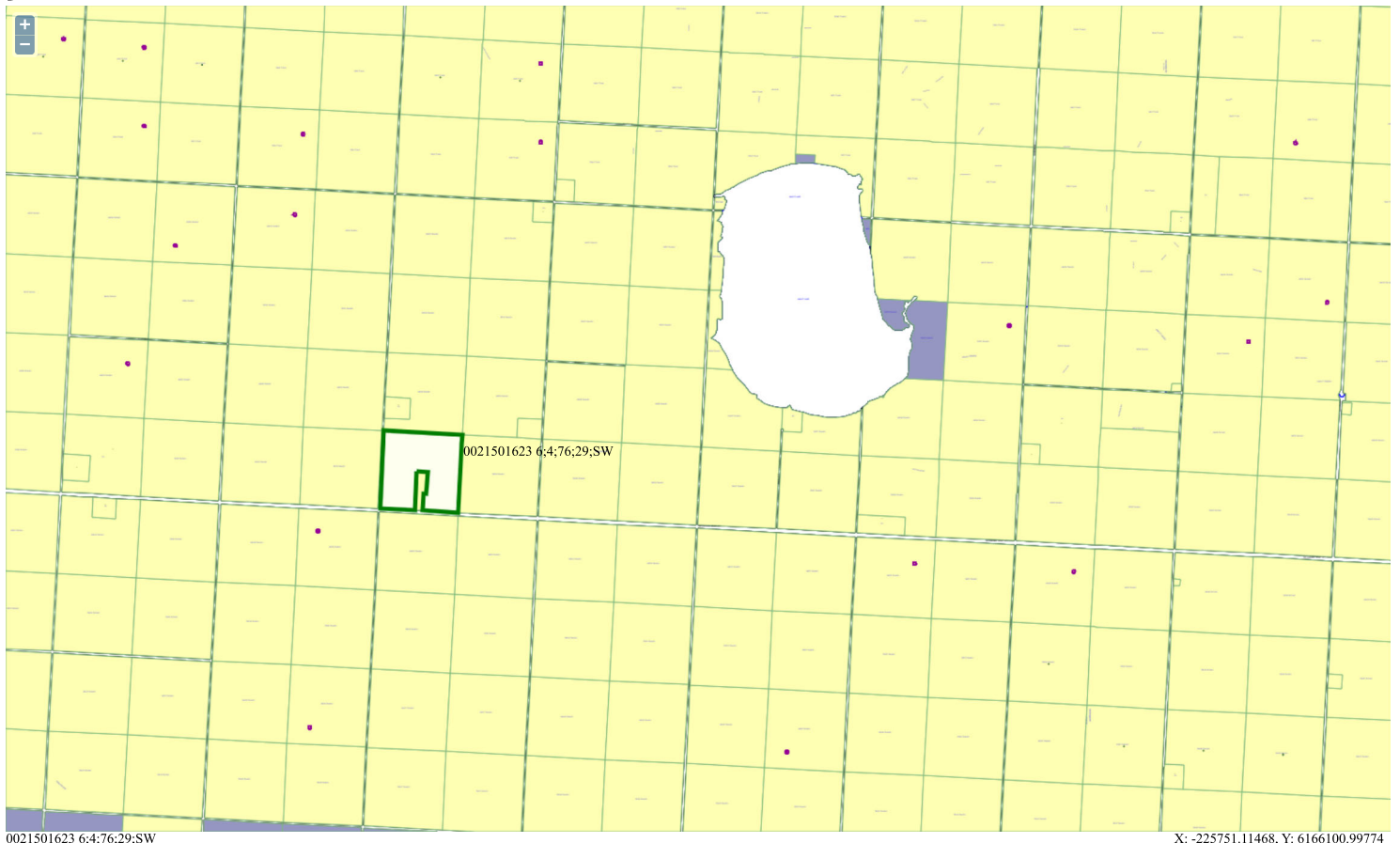
PBL

Address

Place Name

Coordinate

Help with Map



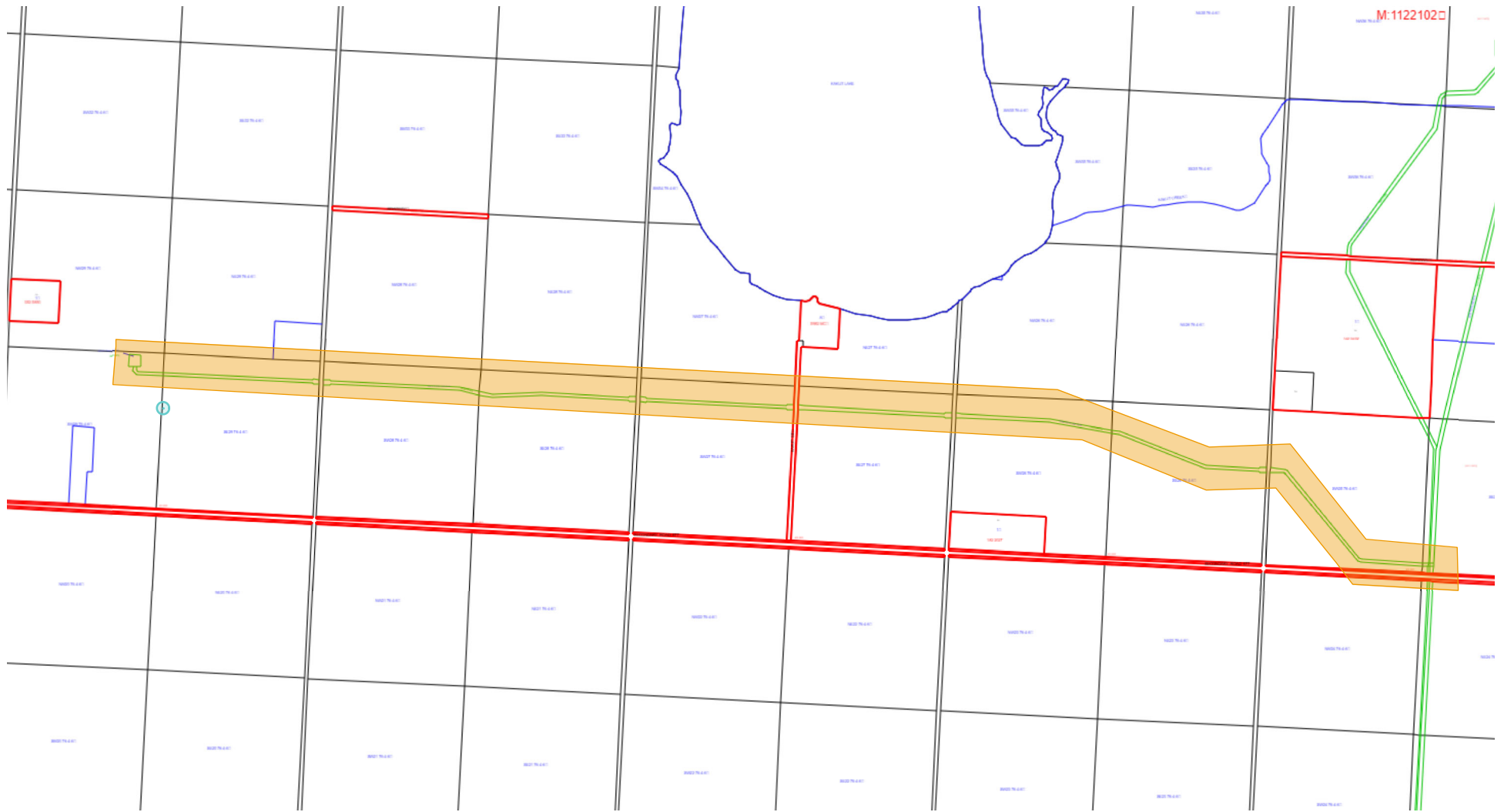
0021501623 6;4;76;29;SW

X: -225751.11468, Y: 6166100.99774



The ESA marker represents an approximate location of a site where the Government of Alberta has received scientific and/or technical information. The marker is an arbitrary, 40 meter diameter circle centered on the property for which this information is attached. For locations or other site information, see the document results table.

Spatial Search provided by the Alberta Land Titles [SPIN 2 System](#)



Date: 19/7/2024
Requestor: Consultant
Reason for Request: Environmental Assessment
SEC: 29 TWP: 076 RGE: 04 MER: 6



■ Non-sensitive EOs (updated: June 2022)

M_RR_TTT_SS	EO_ID	ECODE	S_RANK	SNAME	SCOMNAME	LAST_OBS_D
6-04-076-29	9003	PDGER02070	S2	Geranium carolinianum	Carolina wild geranium	1948-07-27

Next Steps: See FAQ (<https://www.albertaparks.ca/albertaparksca/management-land-use/alberta-conservation-information-management-system-acims/faqs.aspx#2-Process>)

■ Sensitive EOs (updated: June 2022)

M-RR-TTT	EO_ID	ECODE	S_RANK	SNAME	SCOMNAME	LAST_OBS_D
----------	-------	-------	--------	-------	----------	------------

No Sensitive EOs Found: Next Steps - See FAQ (<https://www.albertaparks.ca/albertaparksca/management-land-use/alberta-conservation-information-management-system-acims/faqs.aspx#2-Process>)

Date: 19/7/2024

Requestor: Consultant

Reason for Request: Environmental Assessment

SEC: 28 TWP: 076 RGE: 04 MER: 6



■ Non-sensitive EOs (updated: June 2022)

M_RR_TTT_SS	EO_ID	ECODE	S_RANK	SNAME	SCOMNAME	LAST_OBS_D
6-04-076-28	9003	PDGER02070	S2	Geranium carolinianum	Carolina wild geranium	1948-07-27

Next Steps: See FAQ (<https://www.albertaparks.ca/albertaparksca/management-land-use/alberta-conservation-information-management-system-acims/faqs.aspx#2-Process>)

■ Sensitive EOs (updated: June 2022)

M-RR-TTT	EO_ID	ECODE	S_RANK	SNAME	SCOMNAME	LAST_OBS_D
----------	-------	-------	--------	-------	----------	------------

No Sensitive EOs Found: Next Steps - See FAQ (<https://www.albertaparks.ca/albertaparksca/management-land-use/alberta-conservation-information-management-system-acims/faqs.aspx#2-Process>)

Date: 19/7/2024

Requestor: Consultant

Reason for Request: Environmental Assessment

SEC: 27 TWP: 076 RGE: 04 MER: 6



■ Non-sensitive EOs (updated: June 2022)

M_RR_TTT_SS	EO_ID	ECODE	S_RANK	SNAME	SCOMNAME	LAST_OBS_D
6-04-076-27	9003	PDGER02070	S2	Geranium carolinianum	Carolina wild geranium	1948-07-27

Next Steps: See FAQ (<https://www.albertaparks.ca/albertaparksca/management-land-use/alberta-conservation-information-management-system-acims/faqs.aspx#2-Process>)

■ Sensitive EOs (updated: June 2022)

M-RR-TTT	EO_ID	ECODE	S_RANK	SNAME	SCOMNAME	LAST_OBS_D
----------	-------	-------	--------	-------	----------	------------

No Sensitive EOs Found: Next Steps - See FAQ (<https://www.albertaparks.ca/albertaparksca/management-land-use/alberta-conservation-information-management-system-acims/faqs.aspx#2-Process>)

Date: 19/7/2024

Requestor: Consultant

Reason for Request: Environmental Assessment

SEC: 26 TWP: 076 RGE: 04 MER: 6



■ Non-sensitive EOs (updated: June 2022)

M_RR_TTT_SS	EO_ID	ECODE	S_RANK	SNAME	SCOMNAME	LAST_OBS_D
6-04-076-26	9003	PDGER02070	S2	Geranium carolinianum	Carolina wild geranium	1948-07-27

Next Steps: See FAQ (<https://www.albertaparks.ca/albertaparksca/management-land-use/alberta-conservation-information-management-system-acims/faqs.aspx#2-Process>)

■ Sensitive EOs (updated: June 2022)

M-RR-TTT	EO_ID	ECODE	S_RANK	SNAME	SCOMNAME	LAST_OBS_D
----------	-------	-------	--------	-------	----------	------------

No Sensitive EOs Found: Next Steps - See FAQ (<https://www.albertaparks.ca/albertaparksca/management-land-use/alberta-conservation-information-management-system-acims/faqs.aspx#2-Process>)

Date: 19/7/2024
Requestor: Consultant
Reason for Request: Environmental Assessment
SEC: 25 TWP: 076 RGE: 04 MER: 6



■ Non-sensitive EOs (updated: June 2022)

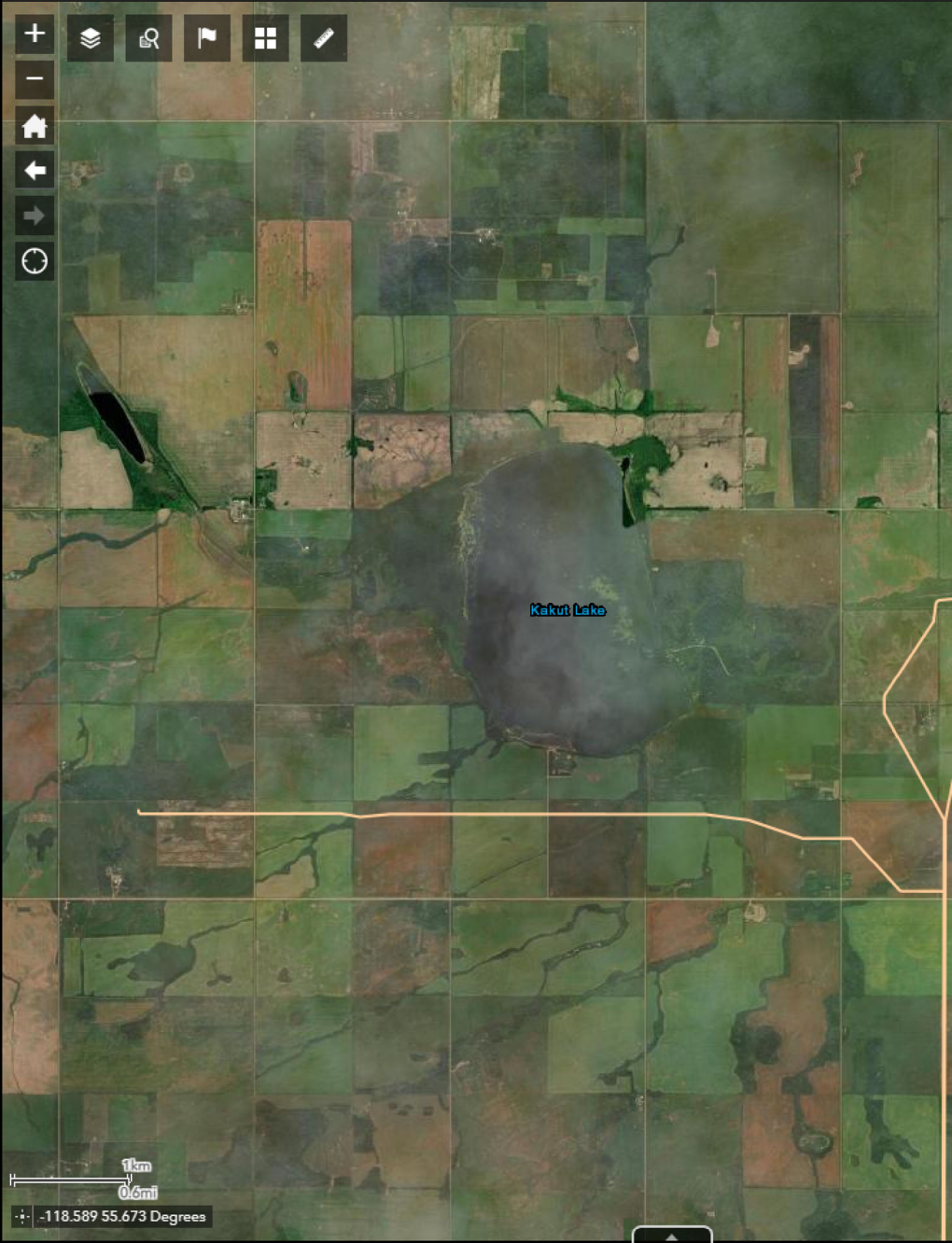
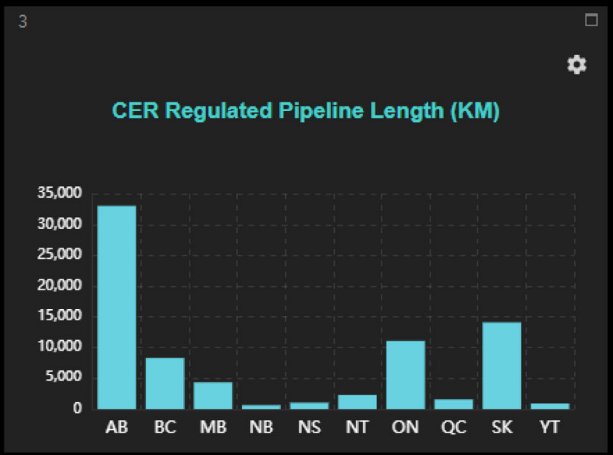
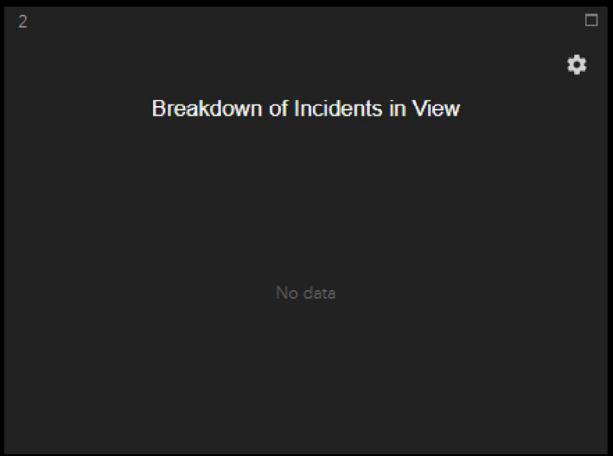
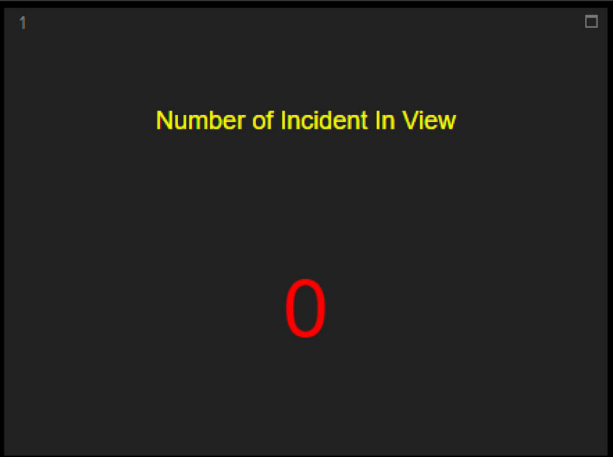
M_RR_TTT_SS	EO_ID	ECODE	S_RANK	SNAME	SCOMNAME	LAST_OBS_D
-------------	-------	-------	--------	-------	----------	------------

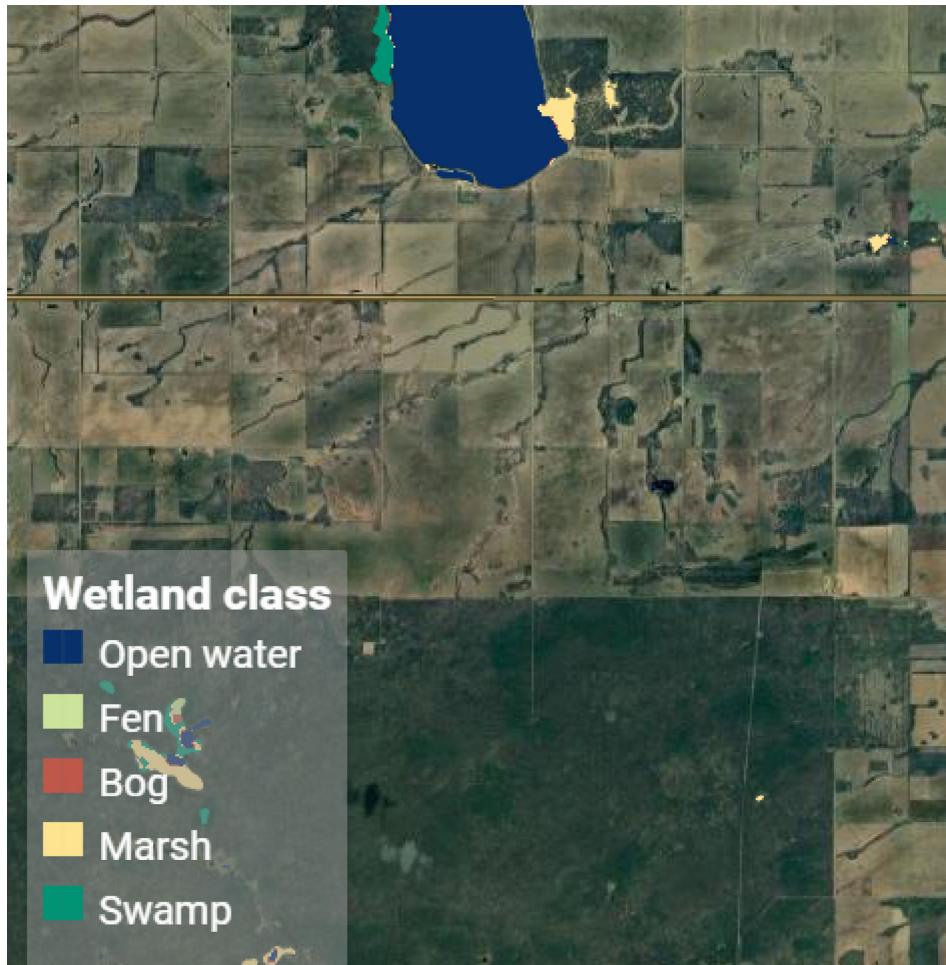
No Non-sensitive EOs Found: Next Steps - See FAQ (<https://www.albertaparks.ca/albertaparksca/management-land-use/alberta-conservation-information-management-system-acims/faqs.aspx#2> - Process)

■ Sensitive EOs (updated: June 2022)

M-RR-TTT	EO_ID	ECODE	S_RANK	SNAME	SCOMNAME	LAST_OBS_D
----------	-------	-------	--------	-------	----------	------------

No Sensitive EOs Found: Next Steps - See FAQ (<https://www.albertaparks.ca/albertaparksca/management-land-use/alberta-conservation-information-management-system-acims/faqs.aspx#2> - Process)







AbaData Pipeline Report

LICENSE / LINE #	PROV	COMPANY NAME	LICENSE DATE	FROM LOCATION	TO LOCATION	LGTH (kms)	STS	SUB	H2S (mol/kmol)	OD (mm)	WT (mm)	MAT	TYPE	GRD	MOP (kpa)	JNT	INTL COAT	STRESS LEVEL (%)	ENV	FIELD
21953 - 16	AB	BIRCH HILLS GAS CO-OP LTD	Apr 9, 1986	3-25-76-4W6 MS	15-8-76-3W6 RS	6.2	O	NG	0	48.3	2.16	A	6063	T1A	3100	H	U	48		RYCROFT
80357 - 2	AB	NOVA GAS TRANSMISSION LTD.	May 29, 2009	2-26-74-4W6 MS	1-13-78-4W6 PL	37.3	O	NG	0	273.1	4.8	S	Z245.1	3592	8450	W	U	67	CC	
80357 - 16	AB	NOVA GAS TRANSMISSION LTD.	May 29, 2009	2-26-74-4W6 PL	1-13-78-4W6 PL	36.24	O	NG	0	219.1	3.58	S	Z245.5	3593	8450	W	U	72	RC	
80515 - 1	AB	NOVA GAS TRANSMISSION LTD.	Jun 2, 2009	6-29-76-4W6 BE	2-25-76-4W6 BE	6.9	D	NG	0	114.3	3.2	S	Z245.1	2901	0	W	U	0		RYCROFT

Government Pipeline Data Current to: June 30, 2024

Page: 1 of 1



AER Well Report

WELL ID	LICENSE #	LICENSE DATE	WELL NAME	LICENSEE	SURFACE LOCATION	LICENSE STATUS	SPUD DATE	FINAL DRILL DATE	WELL STATUS	ABANDON DATE	SURFACE LATITUDE	SURFACE LONGITUDE	DOWNHOLE LATITUDE	DOWNHOLE LONGITUDE	H2S (%)
100 / 01-26-076-04 W6 / 0	0304403	Feb 18, 2004	Canlin RYCROFT 1-26-76-4	CANLIN ENERGY CORPORATION	01-26-076-04W6M	Suspension	Mar 25, 2004	Mar 30, 2004	ABZONE		55.610379	-118.496859	55.610379	-118.496859	0.000
100 / 05-29-076-04 W6 / 0	0332231	Jun 3, 2005	GALLEON RYCROFT 5-29-76-4	LONG RUN EXPLORATION LTD.	05-29-076-04W6M	Abandoned	Jun 21, 2005	Jun 29, 2005	ABD	Jul 14, 2005	55.613108	-118.589824	55.613108	-118.589824	
100 / 06-29-076-04 W6 / 3	0102996	Sep 9, 1983	GUIDEX RYCROFT 6-29-76-4	LONG RUN EXPLORATION LTD.	06-29-076-04W6M	Suspension				Nov 20, 1995	55.613757	-118.583056	55.613757	-118.583056	

Government Well Data Current to: July 08, 2024

Page: 1 of 1

Facility Report



LOCATION	FACILITY ID	FACILITY NAME			STATUS	OPERATOR														
		CATEGORY	TYPE	LICENSE #	LICENSEE															
		FLARING, VENTING & PRODUCTION DATA			OIL (m3)					GAS (1000 m3)					WATER (m3)					
		FIELD CENTRE	FIELD AREA	# OF WELLS	Prod	Recv	Open Inv	Close Inv	Ship	Prod	Recv	Flare	Vent	Meas Diff	Ship	Leas e Fuel	Prod	Recv	Open Inv	Close Inv
06-29-076-04 W6M	ABBT8020029	ANDERSON RYCROFT 6-29			SUSPENDED	CANADIAN NATURAL RESOURCES LIMITED														
		BATTERY	GAS MULTIWELL BATTERY																	
	ABGP0001493	* ANDERSON RYCROFT			ABANDONED	CANADIAN NATURAL RESOURCES LIMITED														
		GAS PLANT	GAS PLANT SWEET		F15824	CANADIAN NATURAL RESOURCES LIMITED														
ABGS0003763	* ANDERSON RYCROFT			SUSPENDED	CANADIAN NATURAL RESOURCES LIMITED															
	GAS GATHERING SYSTEM	GAS GATHERING SYSTEM																		
12-28-076-04 W6M	ABWP0152212	KAKUT LAKE ALTERNATIVE WATER HUB			NEW															
		WASTE PLANT	SURFACE WASTE FACILITY																	

AER Spills & Complaints Report



COMPLAINTS							
INCIDENT DATE	INCIDENT #	NOTIFIED DATE	LICENSEE (AT TIME OF INCIDENT)	SOURCE	CAUSE	STRIKE AREA	FIELD CENTRE
	LICENSE #	COMPLETE DATE	CURRENT LICENSEE	SOURCE IN COMPLIANCE?	CONCERNS		
06-28-076-04 W6M							
OCT 30 2018	20183442	NOV 8 2018	UNKNOWN		PROCEDURAL OR DESIGN - CONSTRUCTION	RYCROFT	GRANDE PRAIRIE
		AUG 7 2019			OPERATIONAL IMPACT - NUISANCE		

TRACE™

A S S O C I A T E S

HEAD OFFICE

Lincoln Park Centre

Suite 300, 37 Richard Way SW

Calgary, Alberta T3E 7M8

1.877.418.7223

traceassociates.ca