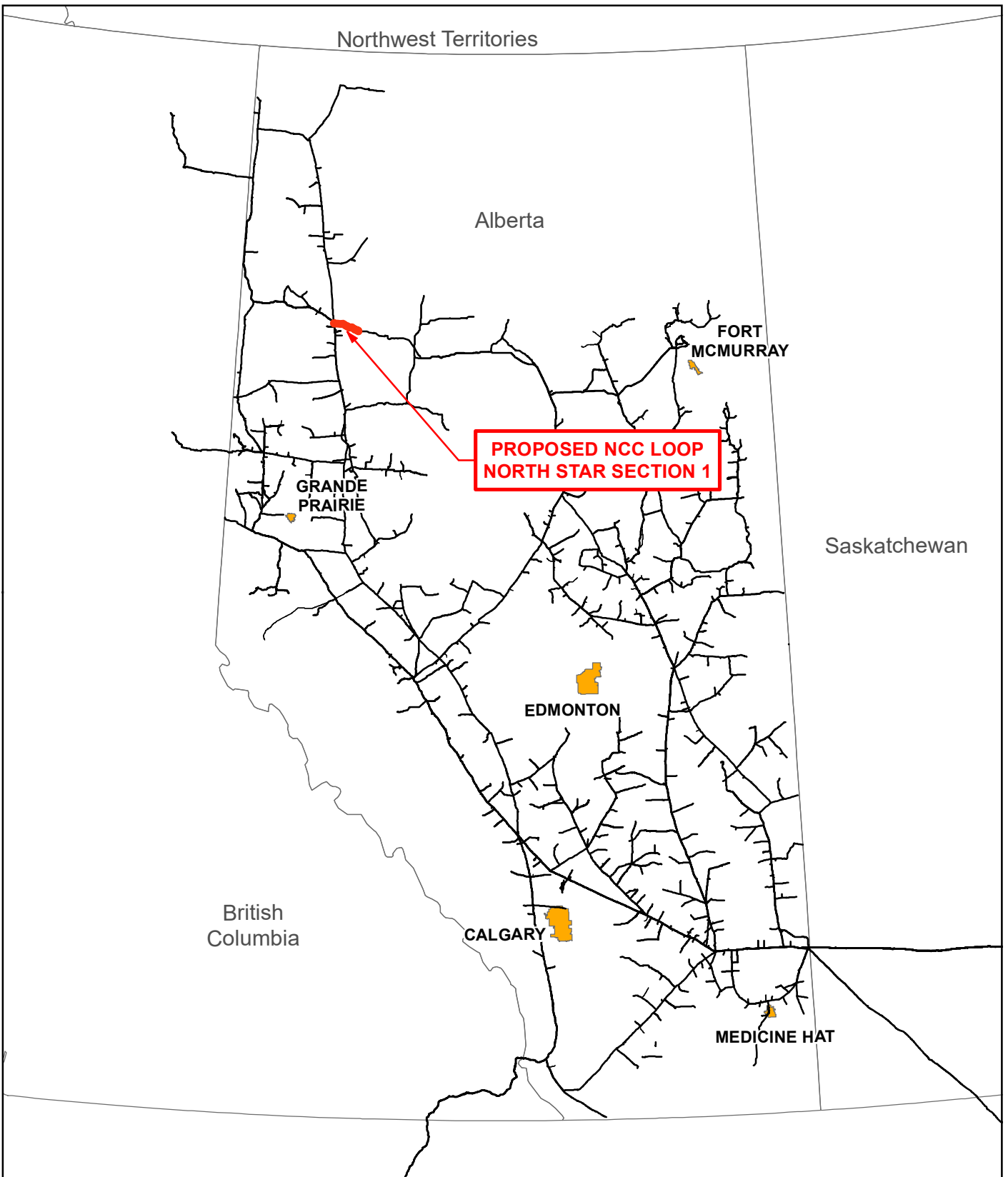
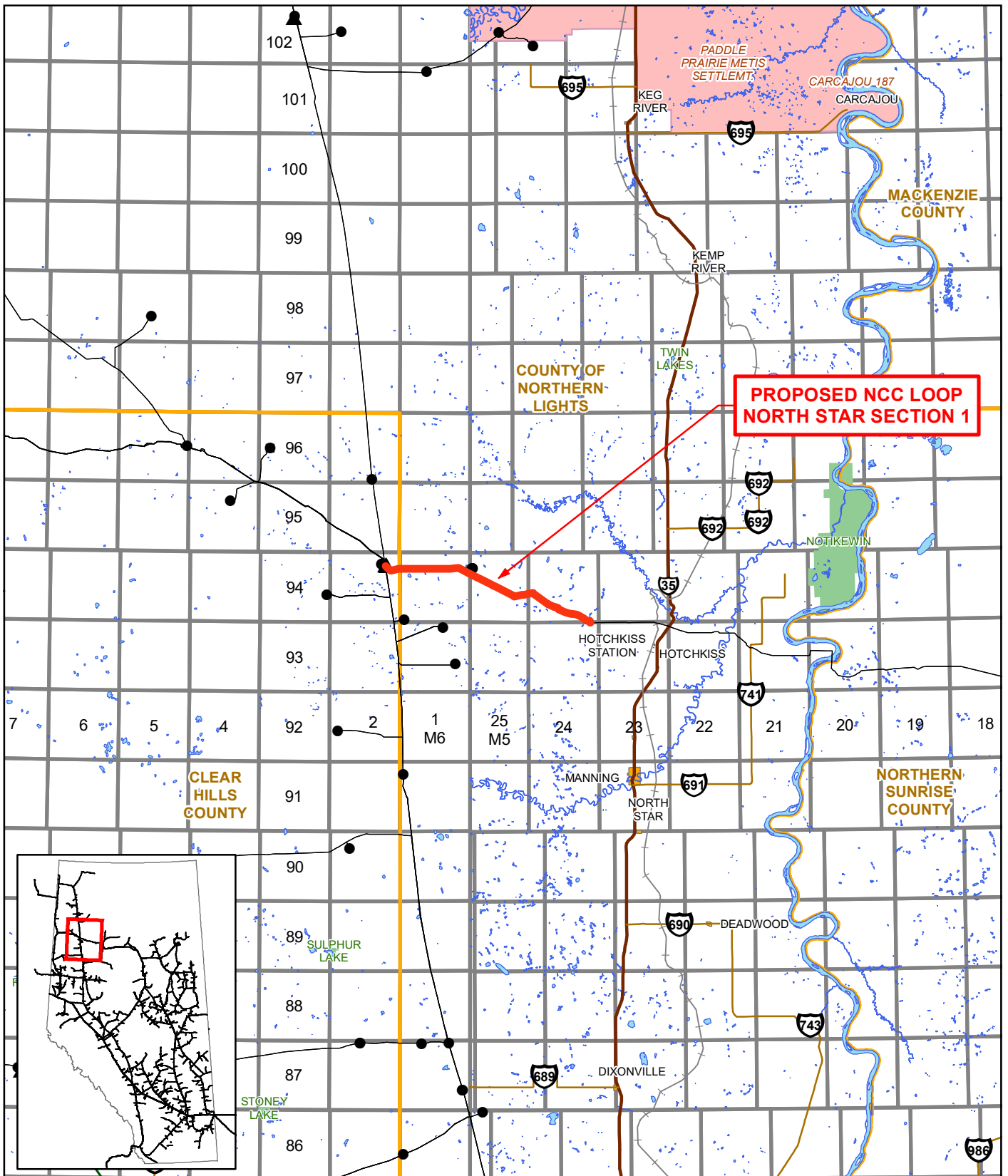


## **Global and Regional Maps**



**TERMS OF USE:** The datasets used to create this map have been gathered from various sources for a specific purpose. TransCanada Corp. provides no warranty regarding the accuracy or completeness of the datasets. Unauthorized or improper use of this map, including supporting datasets is strictly prohibited. TransCanada Corp. accepts no liability whatsoever related to any loss or damages resulting from proper, improper, authorized or unauthorized use of this map and associated datasets and user expressly waives all claims relating to or arising out of use of or reliance on this map.

			<ul style="list-style-type: none"> <li><span style="display: inline-block; width: 15px; height: 10px; background-color: red; margin-right: 5px;"></span> Project Location</li> <li><span style="display: inline-block; width: 15px; border-bottom: 1px solid black; margin-right: 5px;"></span> Existing NGTL Pipeline</li> <li><span style="display: inline-block; width: 15px; height: 10px; background-color: orange; margin-right: 5px;"></span> City / Town</li> </ul>		<b>NORTH CENTRAL CORRIDOR LOOP                  NORTH STAR SECTION 1 PROJECT</b>		
Global					LOCATION:	REVISION: 00	ISSUED DATE: 18-07-23
CARTOGRAPHER: LP	18-07-23		COORDINATE SYSTEM: NAD 1983 UTM Zone 11N			ISSUE PURPOSE: IFU	
REVIEWER: DL	18-07-23		0 25 50 100 150 200 250 km				
APPROVER: JY	18-07-23						
			MAP NUMBER: T_0095_0003_01				



**TERMS OF USE:** The datasets used to create this map have been gathered from various sources for a specific purpose. TransCanada Corp. provides no warranty regarding the accuracy or completeness of the datasets. Unauthorized or improper use of this map, including supporting datasets is strictly prohibited. TransCanada Corp. accepts no liability whatsoever related to any loss or damages resulting from proper, improper, authorized or unauthorized use of this map and associated datasets and user expressly waives all claims relating to or arising out of use of or reliance on this map.

			<ul style="list-style-type: none"> <li><span style="color: red;">—</span> Project Location</li> <li><span style="color: black;">■</span> Delivery Meter Station</li> <li><span style="color: black;">●</span> Receipt Meter Station</li> <li><span style="color: black;">▲</span> Compressor Station</li> </ul>	<ul style="list-style-type: none"> <li>— Existing NGTL Pipeline</li> <li>— ATCO Pipeline</li> <li>— Railway</li> <li>— Primary Highway</li> <li>— Secondary Highway</li> </ul>	<ul style="list-style-type: none"> <li><span style="background-color: yellow; border: 1px solid black; display: inline-block; width: 10px; height: 10px;"></span> City / Town</li> <li><span style="background-color: lightblue; border: 1px solid black; display: inline-block; width: 10px; height: 10px;"></span> River / Lake</li> <li><span style="background-color: pink; border: 1px solid black; display: inline-block; width: 10px; height: 10px;"></span> First Nation Land</li> <li><span style="background-color: lightgreen; border: 1px solid black; display: inline-block; width: 10px; height: 10px;"></span> Metis Settlement</li> <li><span style="background-color: lightgrey; border: 1px solid black; display: inline-block; width: 10px; height: 10px;"></span> Military Reserve</li> <li><span style="border: 2px solid orange; display: inline-block; width: 10px; height: 10px;"></span> County</li> </ul>	<p style="text-align: center;">N</p>
<b>Regional</b>			<b>NORTH CENTRAL CORRIDOR LOOP                  NORTH STAR SECTION 1 PROJECT</b>			
CARTOGRAPHER:	LP	18-07-23	LOCATION:	REVISION: 00	ISSUED DATE: 18-07-23	
REVIEWER:	DL	18-07-23	COORDINATE SYSTEM:	NAD 1983 UTM Zone 11N		
APPROVER:	JY	18-07-23				
			MAP NUMBER: T_0095_0003_02			

Not all legend elements may appear on the map